

03 FITTING SELECTION

MinewTag has equipped dozens of installation accessories for ESL products, including rails, table stands, hooks, clips, floor stands, protective covers, etc. The installation accessories can be selected flexibly so that electronic shelf labels can be fully adapted to different user scenarios.



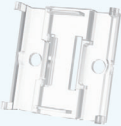







Adapter board	Rail			Removal Tool
				
For 2.13"/2.66"/2.9"/3.5"/4.2"/5.8"/7.5" ESLs	Rail For 1.54"/2.13"/2.66"/2.9"/3.5" ESLs	Anti-scratch plug Only suitable for rails	Angle adjuster Only suitable for rails	Suitable for removing labels from rails, and shells and batteries from labels

Table Stands		
		
T-shaped stand A (transparent) For 2.13"/2.66"/2.9"/3.5"/4.2"/5.8"/7.5" ESLs	T-shaped stand A (white) For 2.13"/2.66"/2.9"/3.5"/4.2"/5.8"/7.5" ESLs	T-shaped stand B For 2.13"/2.66"/2.9"/3.5"/4.2"/5.8"/7.5" ESLs
		
T-shaped stand C For 2.13"/2.66"/2.9"/3.5"/4.2"/5.8"/7.5" ESLs	T-shaped stand D For 2.13"/2.66"/2.9"/3.5"/4.2"/5.8"/7.5" ESLs	Z-shaped stand For 2.13"/2.66"/2.9"/3.5"/4.2"/5.8"/7.5" ESLs



Hook			
			
T-shaped hook A For 2.13"/2.66"/2.9"/3.5"/4.2" ESLs	T-shaped hook B For 2.13"/2.66"/2.9"/3.5"/4.2" ESLs	L-shaped hook For 2.13"/2.66"/2.9"/3.5"/4.2" ESLs	Large-size hook For 7.5"/11.6" ESLs

Protective Case	Floor Stand	
		
For 2.13"/2.66"/2.9" ESLs	Single-side liftable stand For 2.13"/2.66"/2.9"/3.5"/4.2"/5.8"/7.5" ESLs	Double-side liftable stand For 2.13"/2.66"/2.9"/3.5"/4.2"/5.8"/7.5" ESLs

Clip		
		
Board clip (horizontal) For 2.13"/2.66"/2.9"/3.5" ESLs	Board clip (vertical) For 2.13"/2.66"/2.9"/3.5" ESLs	Thumb clip For 2.13"/2.66"/2.9"/3.5"/4.2"/5.8"/7.5" ESLs

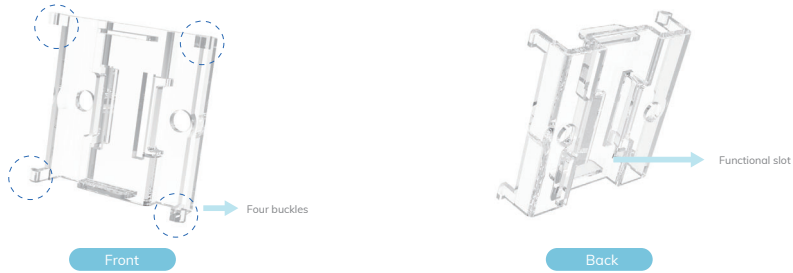
Fixture	Sticker		POE Switch
			
For 2.13"/2.66"/2.9"/3.5"/4.2"/5.8"/7.5" ESLs	Double-sided adhesive sticker	Single-sided adhesive sticker	Adapt to network cable interface
	Suitable for full sizes		

Adapter board

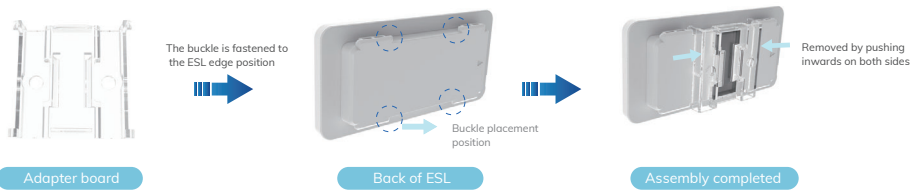


Color	Transparent
Material	Transparent PC
Size	37*36*10 mm
Suitable screen size	2.13", 2.66", 2.9", 3.5", 4.2", 5.8", 7.5"
Features	This is the basic accessory of the electronic tag and can be used with other accessories. Four corners on the front each snap can be assembled to the edge snap corners of ESLs under 4.2 inches, or can fit into the groove on the back of 4.2-inch and larger transponders. There are functional slots for assembling other accessories.

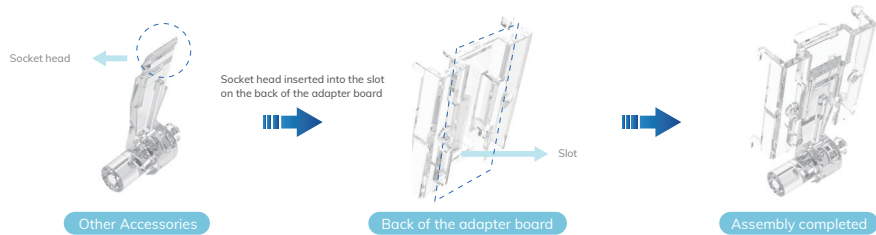
Product view



User guide



Case show



Rail



Color	Light blue transparent
Material	Transparent PVC
Size	/
Suitable screen size	1.54", 2.13", 2.66", 2.9", 3.5"
Features	Suitable for standard shelves with adjustable guide rail angle. The guide rail can be fixed on the shelf by screws, glue, double-sided tape and other materials, and the small-sized ESLs can directly slide into the guide rail through the cross section of the guide rail, and can move freely inside the guide rail.
Remark	The 1 meter guide rail is equipped with 3 double-sided glue, 3 angle adjusters and 2 anti-scratch plugs.

Product view



User guide



Case show

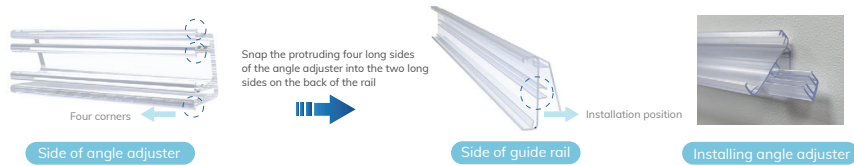


Angle adjuster (for guide rail only)



Color	Light blue transparent
Material	Transparent PC
Features	Suitable for standard racks with adjustable guide angle.

User guide



Case show



Anti-scratch plug (for guide rail only)



Color	Transparent
Material	PVC
Features	Installed at both ends of the guide rail to prevent being scratched by the guide rail.

Product view



Table Stands — T-shaped stand A

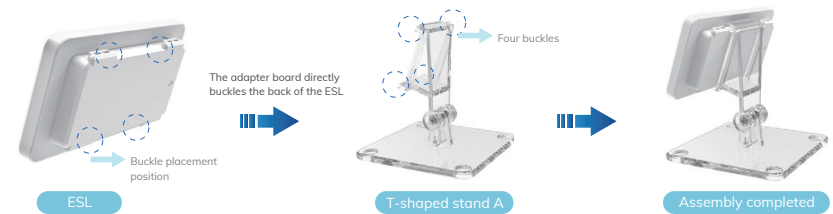


Color	White, Transparent
Material	ABS, PC1100
Size	Base: 70*70*23 mm, Buckle: 54*36*29 mm
Suitable screen size	2.13", 2.66", 2.9", 3.5", 4.2", 5.8", 7.5"
Features	It comes with an adapter board, which can be placed directly for use, and the neck can be turned back and forth by 50°

Product view



User guide



Adjust angle

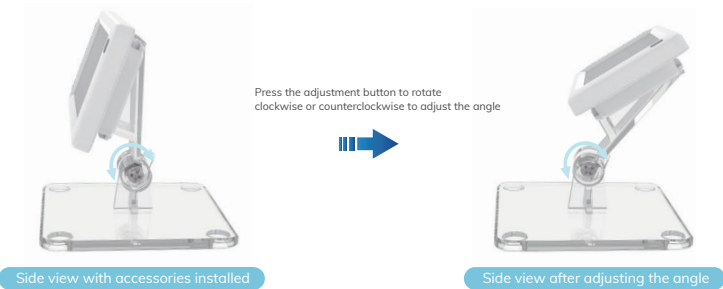


Table Stands — T-shaped stand B

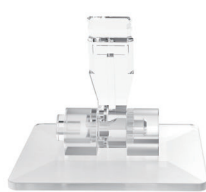


Color	Transparent
Material	Transparent PC
Suitable screen size	2.13", 2.66", 2.9", 3.5", 4.2", 5.8", 7.5"
Feature	Multi-angle adjustment of the display angle of the label
Remark	Use with an adapter board as needed

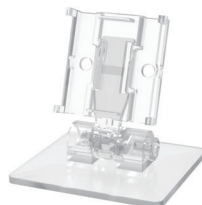
Product view



Front

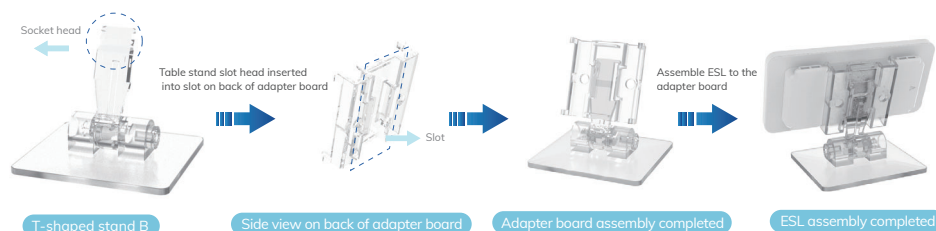


Back



Install the front side of the adapter board

User guide



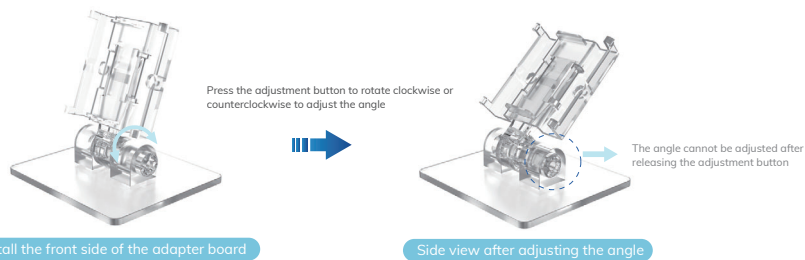
T-shaped stand B

Side view on back of adapter board

Adapter board assembly completed

ESL assembly completed

Adjust angle



Install the front side of the adapter board

Side view after adjusting the angle

Table Stands — T-shaped stand C



Color	Transparent
Material	Transparent PC
Suitable screen size	2.13", 2.66", 2.9", 3.5", 4.2", 5.8", 7.5"
Features	Multi-angle adjustment of the display angle of the label
Remark	Use with an adapter board as needed

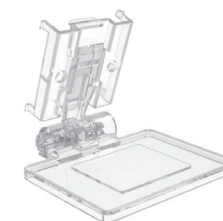
Product view



Front

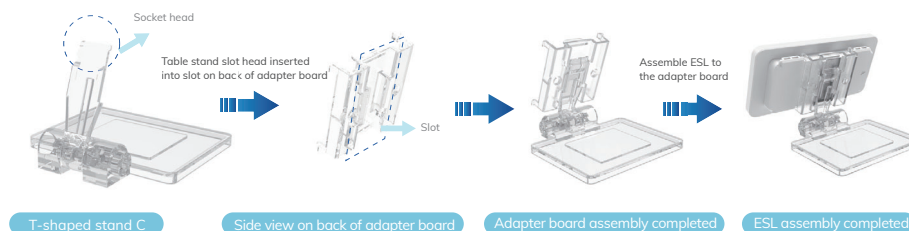


Back



Install the side of the adapter board

User guide



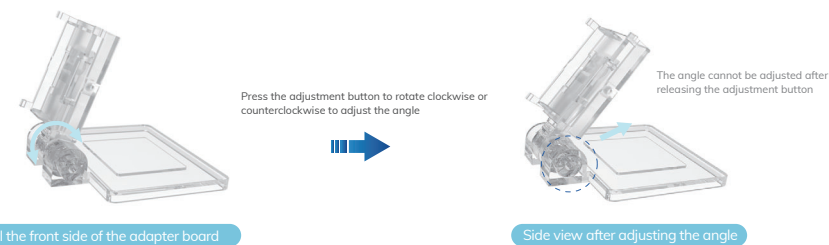
T-shaped stand C

Side view on back of adapter board

Adapter board assembly completed

ESL assembly completed

Adjust angle



Install the front side of the adapter board

Side view after adjusting the angle

Table Stands — T-shaped stand D



Color	Transparent
Material	Transparent PC
Suitable screen size	2.13", 2.66", 2.9", 3.5", 4.2", 5.8"
Features	The table stand is 70 mm high, which can highlight product information
Remark	Use with an adapter board as needed

Product view



Front

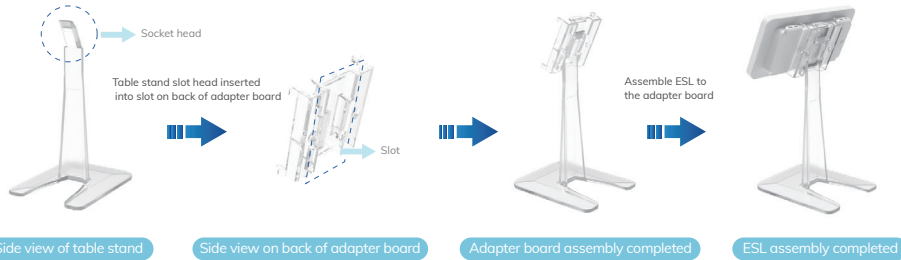


Front



Install the front side of the adapter board

User guide



Case show



Table Stands — Z-shaped stand



Color	White
Material	PC
Suitable screen size	2.13", 2.66", 2.9", 3.5", 4.2", 5.8", 7.5"
Features	Special-shaped table stand, with a great sense of design
Remark	Use with an adapter board as needed

Product view



Front

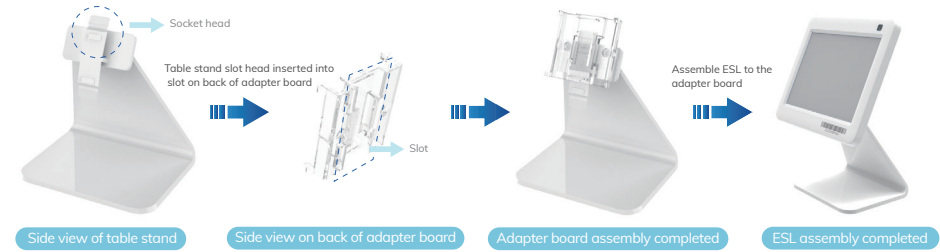


Back



Install the front side of the adapter board

User guide



Case show



Hook —— T-shaped hook A



Color	Transparent
Material	PC1100
Suitable screen size	2.13", 2.66", 2.9", 3.5", 4.2"
Features	Equipped with an adaptive clip, which can be directly assembled with the ESL, and can adapt to round rods with a diameter of 4.8 to 6.0 mm

Product view

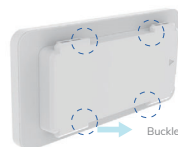


Side view



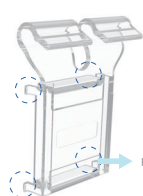
Back

User guide



Side view on back of ESL

The buckle fastens the back of the ESL



Side view on back of hook

Four buckles



Assembly completed

Case show



Hook —— T-shaped hook B



Color	Transparent
Material	Transparent PC
Suitable screen size	2.13", 2.66", 2.9", 3.5", 4.2"
Features	The display angle of the label can be adjusted from multiple angles, suitable for 3 to 6 mm or 5 to 9 mm diameter round rods
Remark	Use with an adapter board as needed.

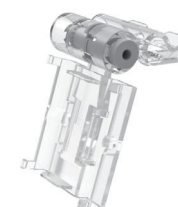
Product view



Front

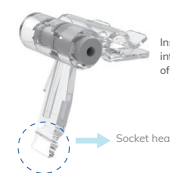


Back



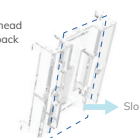
Install the front side of the adapter board

User guide



Side view of hook

Insert the hook slot head into the slot on the back of the adapter plate



Side view on back of adapter board



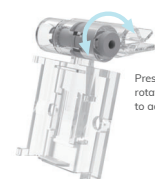
Adapter board assembly completed

Assemble ESL to the adapter board

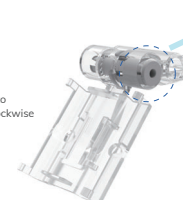


ESL assembly completed

Adjust angle



Install the front side of the adapter board



Side view after adjusting the angle

The angle cannot be adjusted after releasing the adjustment button



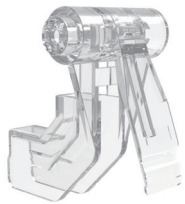
Labeled overall diagram with wooden planks clamped

Hook — L-shaped hook



Color	Transparent
Material	Transparent PC
Suitable screen size	2.13", 2.66", 2.9", 3.5", 4.2"
Features	The display angle of the label can be adjusted from multiple angles, and the L-shaped display rod with a diameter of 6 mm or 8 mm can be adapted
Remark	Use with an adapter board as needed

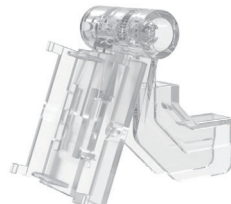
Product view



Front

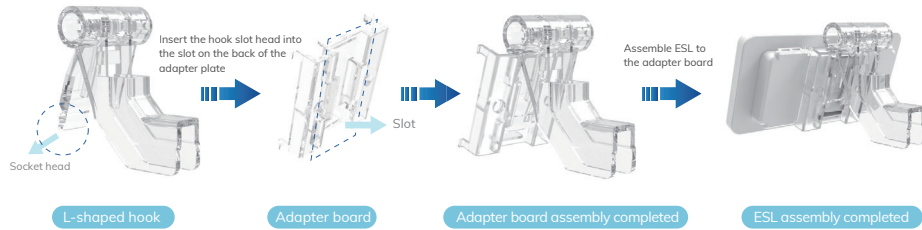


Back

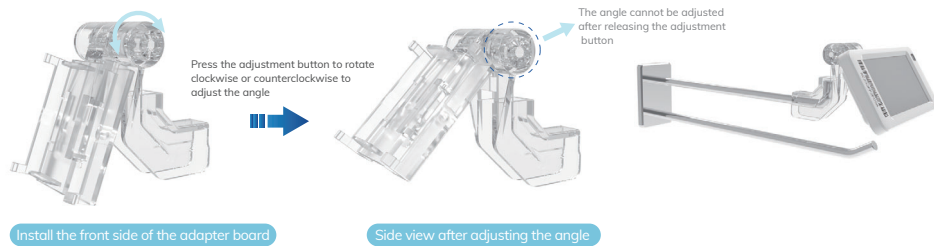


Install the front side of the adapter board

User guide



Adjust angle



Hook — Large-size hook



Color	Transparent
Material	PC1100
Suitable screen size	7.5", 11.6"
Features	Equipped with an adaptive clip, which can be directly assembled with the ESL, and can adapt to round rods with a diameter of 4.8~6.0 mm

Product view

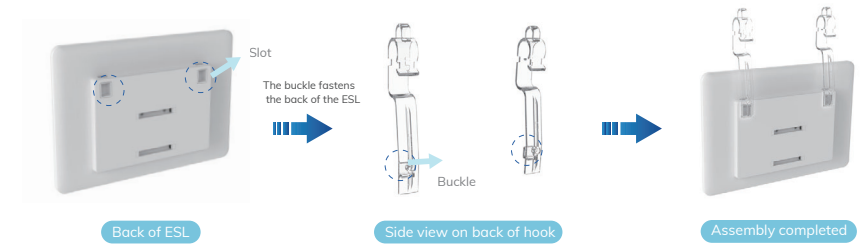


Side view

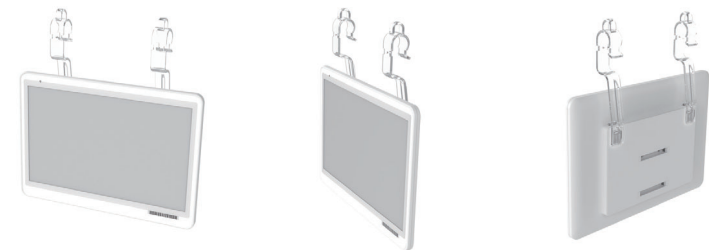


Back

User guide



Case show



Clip—Wooden clip (horizontal)

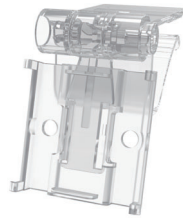


Color	Transparent
Material	Transparent PC
Suitable screen size	2.13", 2.66", 2.9", 3.5"
Feature	Suitable for laminate structure with thickness of 12~20 mm. The display angle of labels can be adjusted from multiple angles.
Remark	Use with an adapter board as needed.

Product view



Front

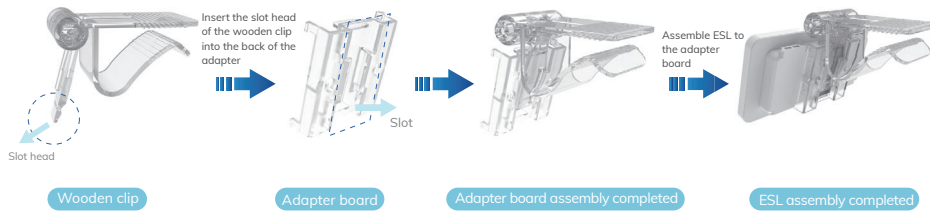


Install the front side of the adapter board

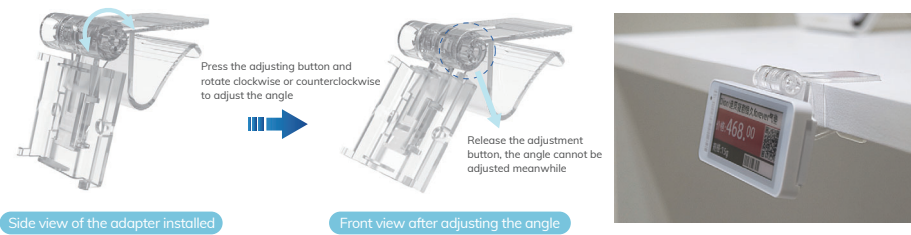


Install the side of the adapter board

User guide



Adjust angle



Clip—Wooden clip (vertical)

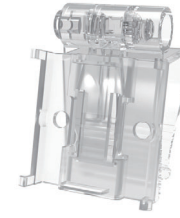


Color	Transparent
Material	Transparent PC
Suitable screen size	2.13", 2.66", 2.9", 3.5"
Feature	Suitable for partitions with a thickness of 12 to 20 mm. The display angle of labels can be adjusted from multiple angles.
Remark	Use with an adapter board as needed.

Product view



Side

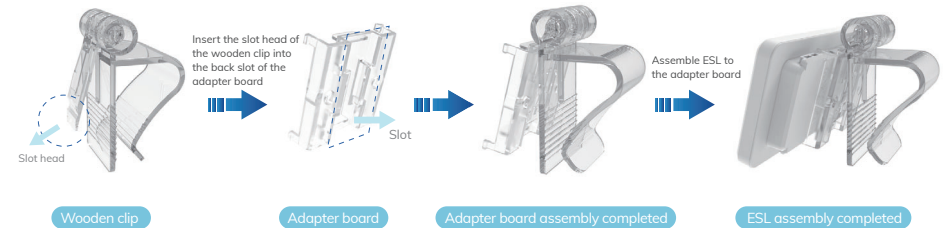


Install the front side of the adapter board

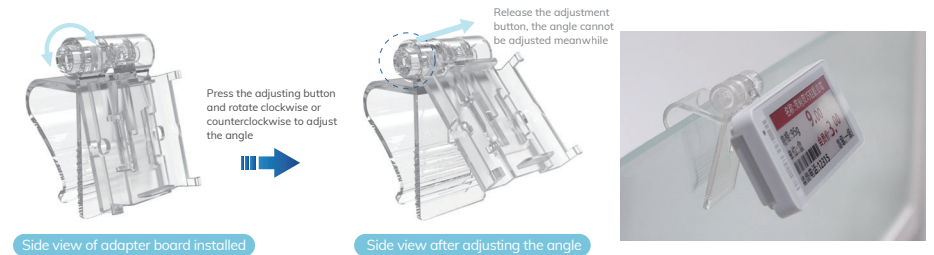


Install the side of the adapter board

User guide



Adjust angle



Clip—Thumb clip floor stand



Color	Gray
Material	ABS
Suitable screen size	2.13", 2.66", 2.9", 3.5", 4.2", 5.8", 7.5"
Feature	Suitable for fruit baskets, glass, etc. with a thickness of 2~25 mm, it can be turned up and down 180°, and left and right can be rotated 360°.
Remark	Use with an adapter board as needed.

Product view



Front

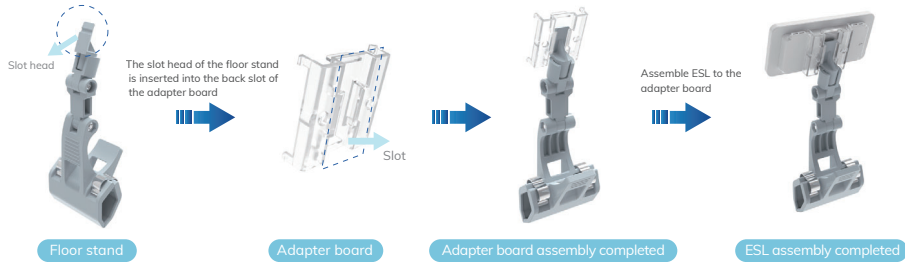


Install the front side of the adapter board

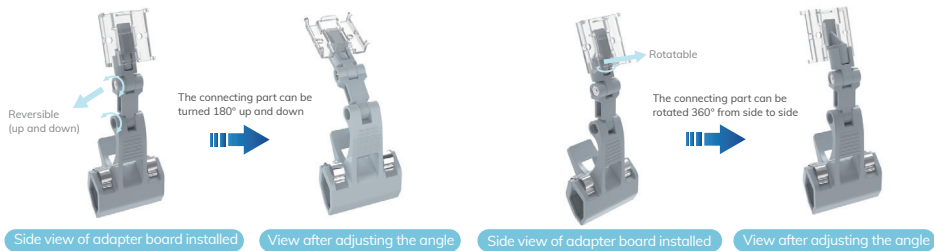


Install the side of the adapter board

User guide



Adjust angle



Floor stand—Single screen liftable floor stand



Color	Black
Material	Metal, paint
Suitable screen size	2.13", 2.66", 2.9", 3.5", 4.2", 5.8", 7.5"
Feature	Adjustable up and down, raising 28~48 cm
Remark	Use with an adapter board as needed.

Product view



Install the front side of the adapter board

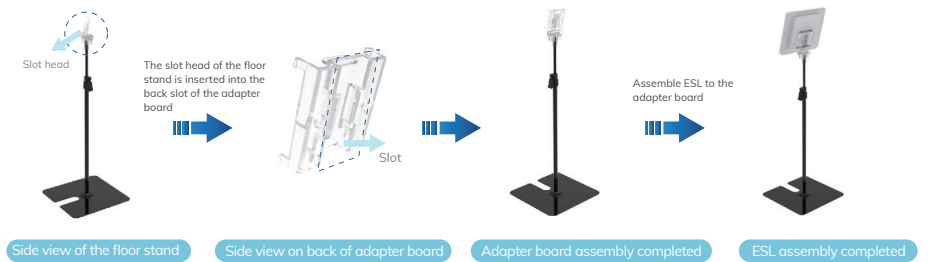


Install the side of the adapter board



Installation labels

User guide



Adjust the height



Floor stand—Dual screen lifting floor stand



Color	Black
Material	Metal, paint
Suitable screen size	2.13", 2.66", 2.9", 3.5", 4.2", 5.8", 7.5"
Feature	2 electronic shelf labels can be equipped for display at the same time. The height can be adjusted up and down to raise 45~75 cm
Remark	Use with an adapter board as needed.

Product view



No adapter board added

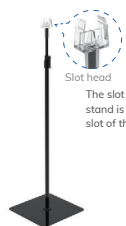


Adapter board added

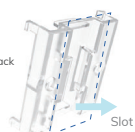


Installation labels

User guide



Side view of the floor stand



Side view of the back of the adapter



Adapter board assembly completed

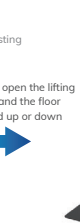


The label assembly completed

Adjust the height



Side view of adapter board installed



View after adjusting the angle



Side view of adapter board installed



View after adjusting the angle

Protective case



Color	Transparent
Material	PC1100
Optional size	2.13", 2.66", 2.9"
Feature	The specific type of ESL can be installed in the protective case to protect the electronic label from scratch damage.

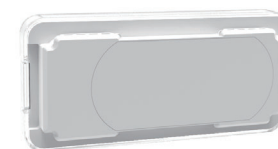
Product view



Front



Side of the installation label



Back of the installation label

User guide

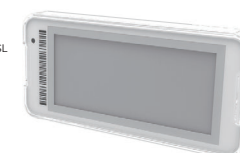


Protective case



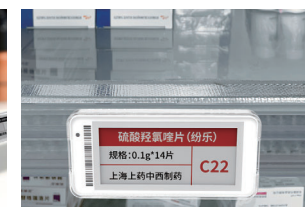
Electronic shelf label

Place the appropriate ESL into the protection cover



The label assembly completed

Case show



Fixture



Color	Transparent
Material	Transparent PC
Suitable screen size	2.13", 2.66", 2.9", 3.5", 4.2", 5.8", 7.5"
Feature	The display angle of the label can be adjusted from multiple angles. There are sharp corners at the bottom, which are suitable for the scene of grain pile and ice pile.
Remark	Use with an adapter board as needed.

Product view



Front

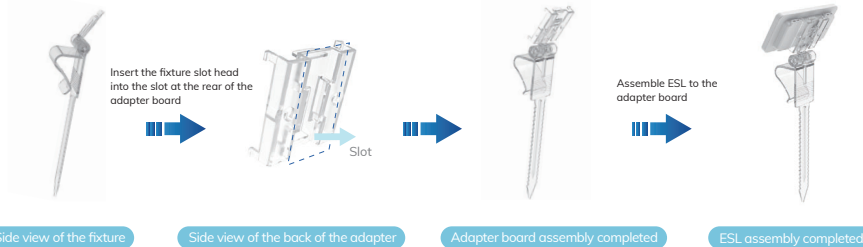


Install the front side of the adapter board

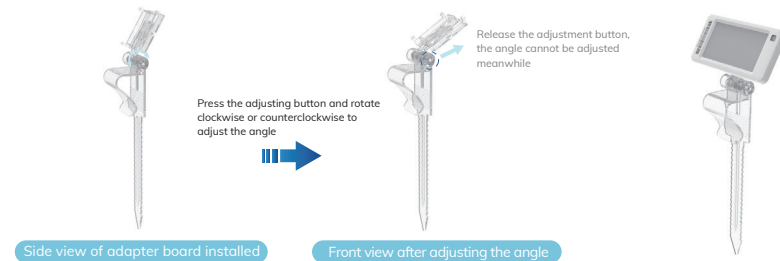


Install the side of the adapter board

User guide



Adjust angle



Double-sided adhesive sticker



Color	Transparent
Suitable screen size	Full-size ESLs
Feature	Suitable for full-size ESLs. Applicable to any scenario where 3M adhesive can be attached.

User guide



Single-sided adhesive sticker



Color	Black
Suitable screen size	Full-size ESLs
Feature	Suitable for full-size ESLs. Applicable to any scenario where 3M adhesive can be attached, easy installation and disassembly.

User guide



Case show



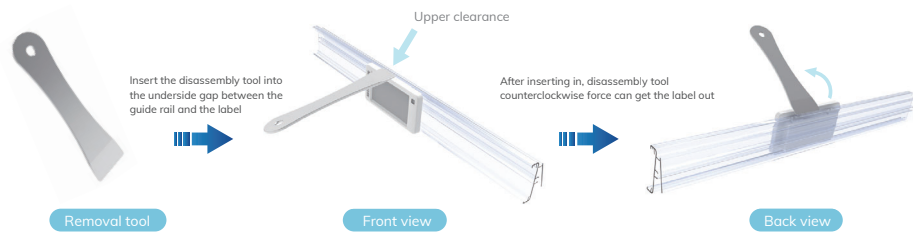
Removal tool



Color	Black
Material	Stainless steel
Feature	Suitable for removing labels from rails, and shells and batteries

User guide

Disassembly from top ▶▶



Remove batteries from ESL ▶▶



Remove the shell from ESL ▶▶



POE switch version A



Specification	POE15F—48V—I
Slot	2-port slot
Size	82.66*46.83*40.26 mm
Voltage	48 V-15 W , anti-thunder 4 KV
Operating temperature	0~40℃

POE switch version B



Specification	GRT—480050
Slot	2-port slot
Size	90.45*45.32*34.33 mm
Voltage	48V-0.5A
Operating temperature	0~40℃

User guide



Insert the network cable into the switch