

Nature Mini PRO(PoE)

Stable Connection for Stable Smart

Stable Network | Works as a Gateway |
Low Power Consumption Screen | PoE Power Supply

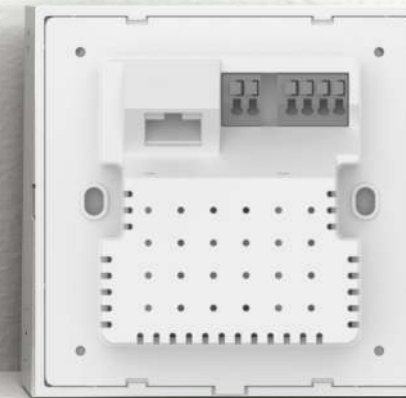


Stable Network : Support RJ45 interface for stable network connection;

Works as A Gateway : One panel to connect and manage the whole room smart devices

Low Power Consumption Screen : Designed with low power consumption OS, low power consumption chip and transmission protocol.

PoE Power Supply: Supports two methods of power supply including DC 12V and PoE 48V.



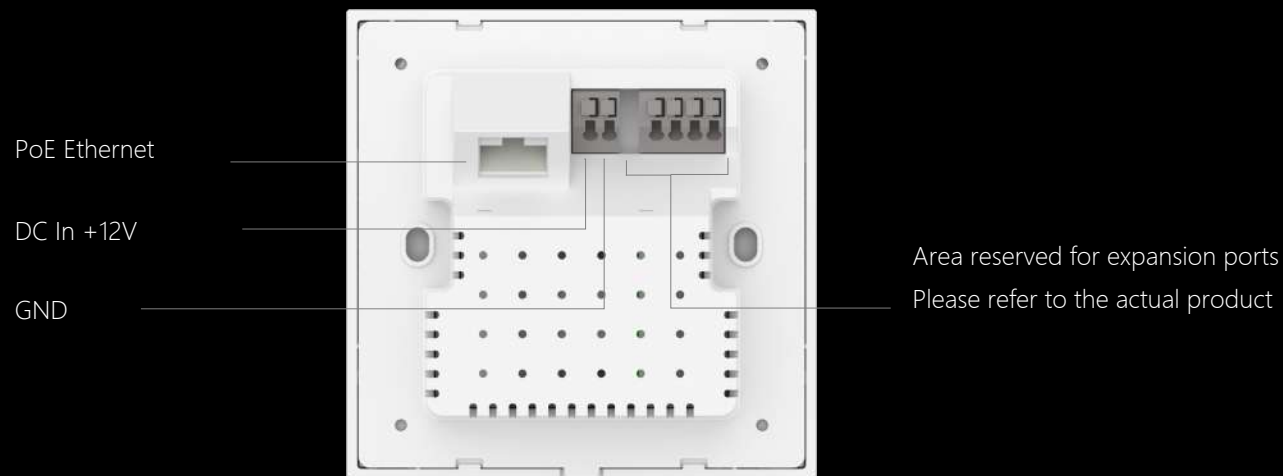
Multi-Protocol Wireless Transmission Protocol

- 5GHz+2.4GHz dual-band Wi-Fi, the transmission speed is triple time than 2.4GHz Wi-Fi.
- The coverage of CoSS is expanded by more stable connection.
- Supports Zigbee, BLE protocol for connecting more third-party devices.

5G Wi-Fi

PoE Power Supply for a more Stable Network

- Supports two methods of power supply including DC 12V and PoE 48V.
- Support RJ45 interface for stable network connection.
- Supports wireless APs to extend network coverage and eliminate network dead spots.



*NOTE:

The Smart Control Panel and Accessor must be of PoE version at the same time to be used together.

Do not use the PoE panel for other accessories , or use the PoE accessory for other panels.

If the panel and accessory are used incorrectly as a set , the equipment may be damaged.

Professional Material Selection

Special Relay for Smart Switches

Designed with 16A magnetic latching relay, which makes the switch keep unglued even after 38880 times' switches



Safe and Protection

100–240V Wide voltage. Supports weak electricity and strong electricity isolation, stable power supply and lightning protection

V0 Flame–Retardant

Fire retardant and durable

System-level Low Power Consumption Screen

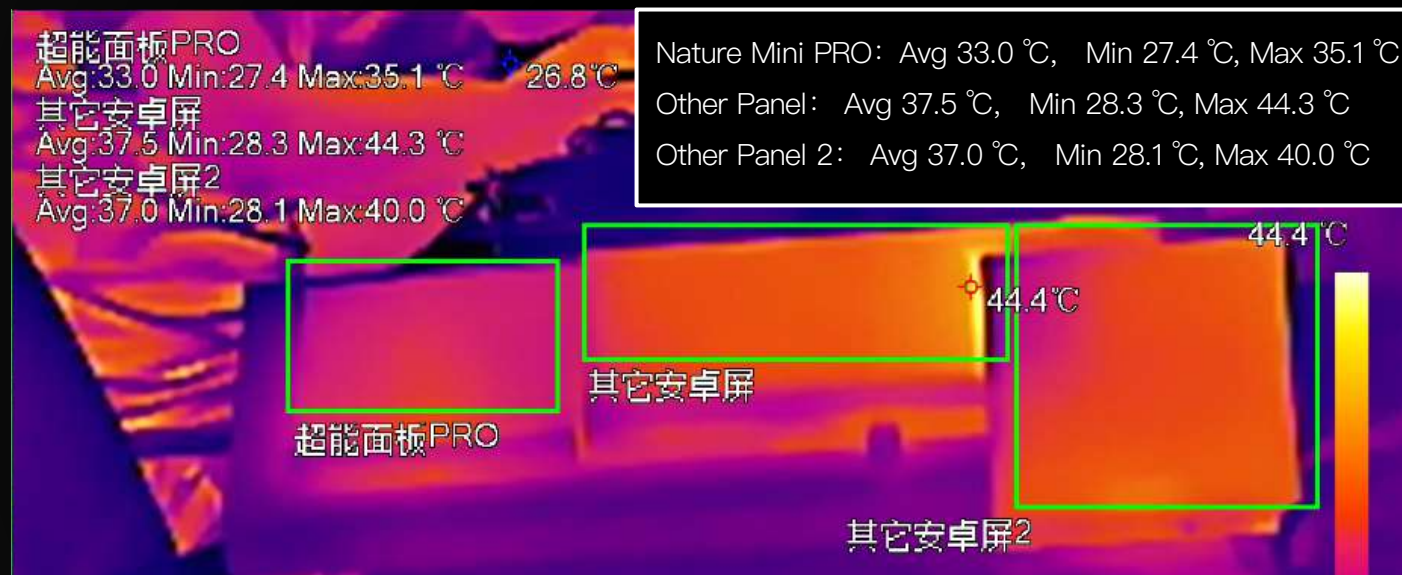
Ultra-low power processor

- Daily power consumption $\leq 0.5W$, and instantaneous power consumption does not exceed 1W
- Energy saving and electricity saving
- The maximum screen temperature $\leq 36^{\circ}C$, which meets the comfortable temperature requirement of human-computer interaction



Embedded low power consumption system

- Customize the Linux system to create low power consumption and fast panel for smart home



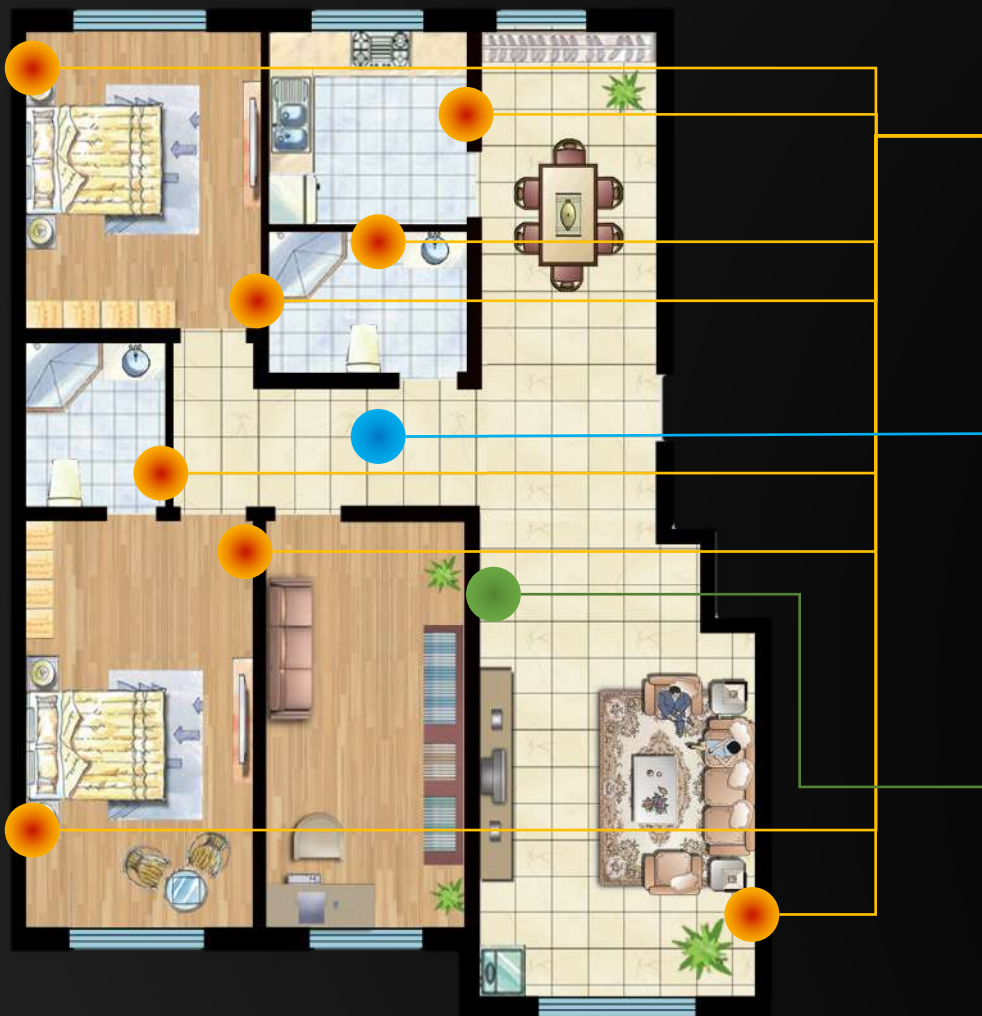
Reddot Award Best of the Best



Approved by the world's top designers | Narrow frame and high screen ratio | Modular structure designed for easy installation

Gold Award of 2021 Sunflower, a Smart Home Award

Nature Mini PRO should be installed in every single room



Nature Mini PRO

Recommend to install 1~3 Nature Mini PRO for every room.
Nature Mini PRO can work as a smart station or just a smart switch.



Smart Station PRO

Recommend to install 1~2 Smart Station for every room to manage the whole smart home system.



Nature 7/Nature

Recommend to install Nature 7 or Nature in the living room or entrance of the house.

Smart Life is Easy to Reach



Bedroom



Bathroom



Entering

Nature Mini PRO (PoE)

LS268-WP1/GP1

LifeSmart

Spec

General

Model Number	LS268-WP1/GP1
Installation	In-wall concealed with 86 back box
Operating Temperature	-5~45°C
Operating Humidity	5~90%
Network	Wi-Fi 2.4GHz/5GHz
Interface	PoE Ethernet, DC In +12V, GND
Screen	4 inch
Resolution	480*480
Operation System	Linux
Power Supply	DC 12V or PoE 48V
Bluetooth	No
Speaker	Yes

Radio

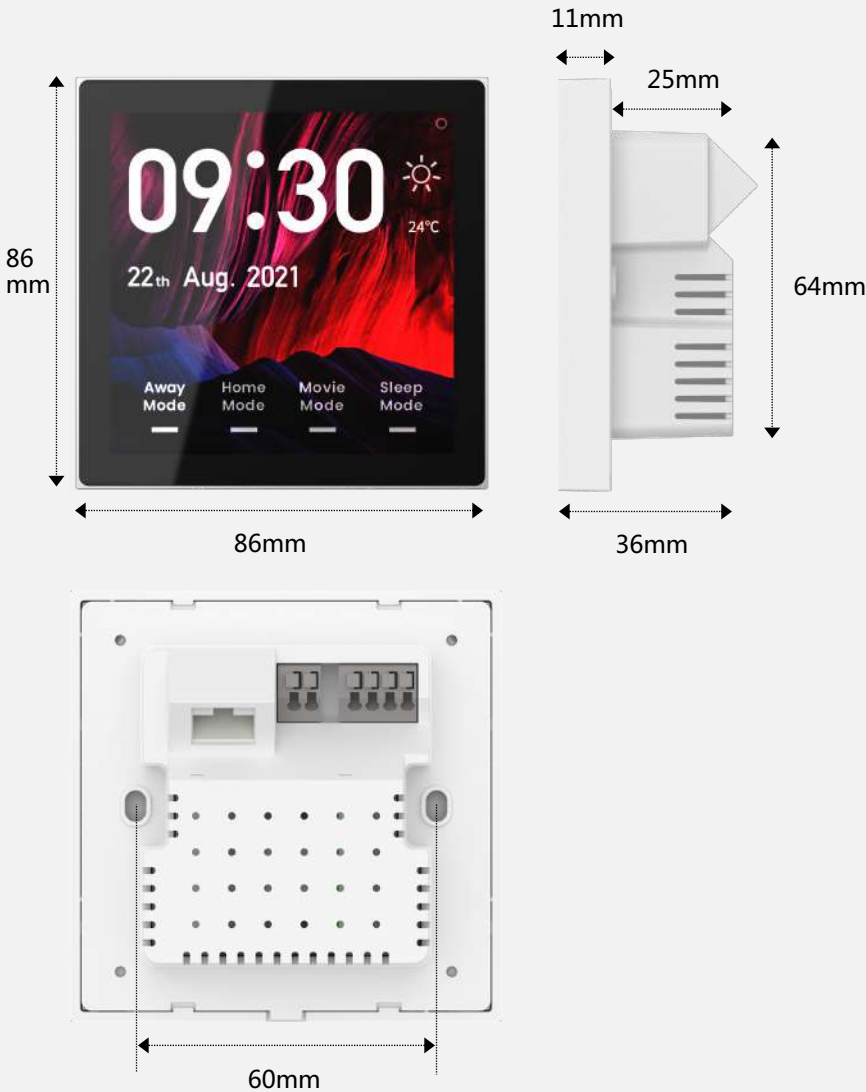
Radio Protocol	CoSS, Zigbee, Wi-Fi
Signal Range(Open Field)	200m(CoSS)

Construction

White/Black	White/Gray
Dimension	Outside the wall:86*86*11mm; Whole product:86*86*36mm;
Casing	Flameresistant PC
Net Weight	141g
Gross Weight	199g

Software

Functions	One-click pairing, device management, weather display, scenes control, multi GUI skin, device control, remote control via mobile app
Support Devices	All CoSS equipment, SONOS music box
Controllable Devices	Switches, lights, curtain motors, tubular motors, underfloor thermostats, fan coil thermostat, air conditioner gateways, electrical appliances(via SPOT-universal infrared controllers), etc.



Spec. of Nature Mini PRO Series

Product Name	Nature Mini PRO	Nature Mini PRO (Thermostat)	Nature Mini PoE
Interface	L, N, L1, L2, L3	L, N, Low, Mid, High, V1, V2	PoE, DC power
Audio	√	√	√
Speaker	√	√	√
Temperature Sensor	√	√	√
Works as a Gateway	√	√	√
Connected Devices No.	500	500	500
Wireless Transmission Distance	200m (Open field)	200m (Open field)	200m (Open field)
Remote Control	√	√	√
Power Supply	100-240V Wide range voltage	100-240V Wide range voltage	48V PoE / DC 12V
Installation	86 box	86 box	86 box

Nature Series



reddot award 2021
best of the best

