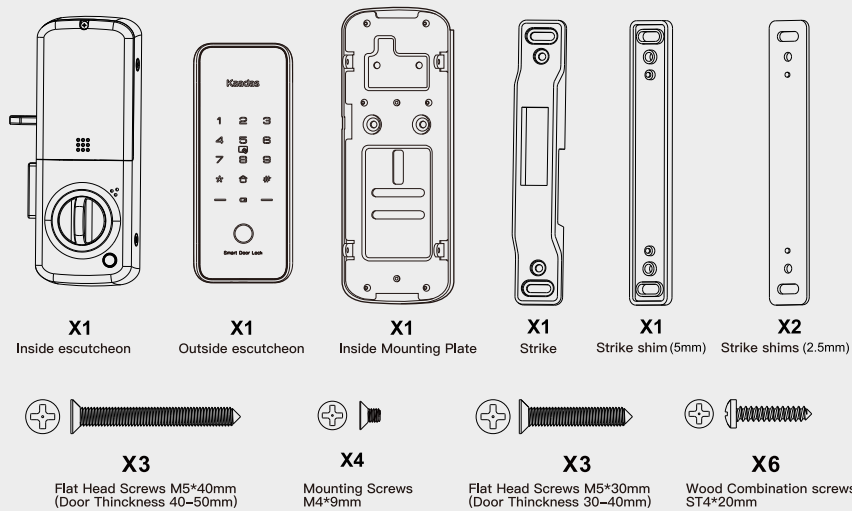


R6 Series
User Manual

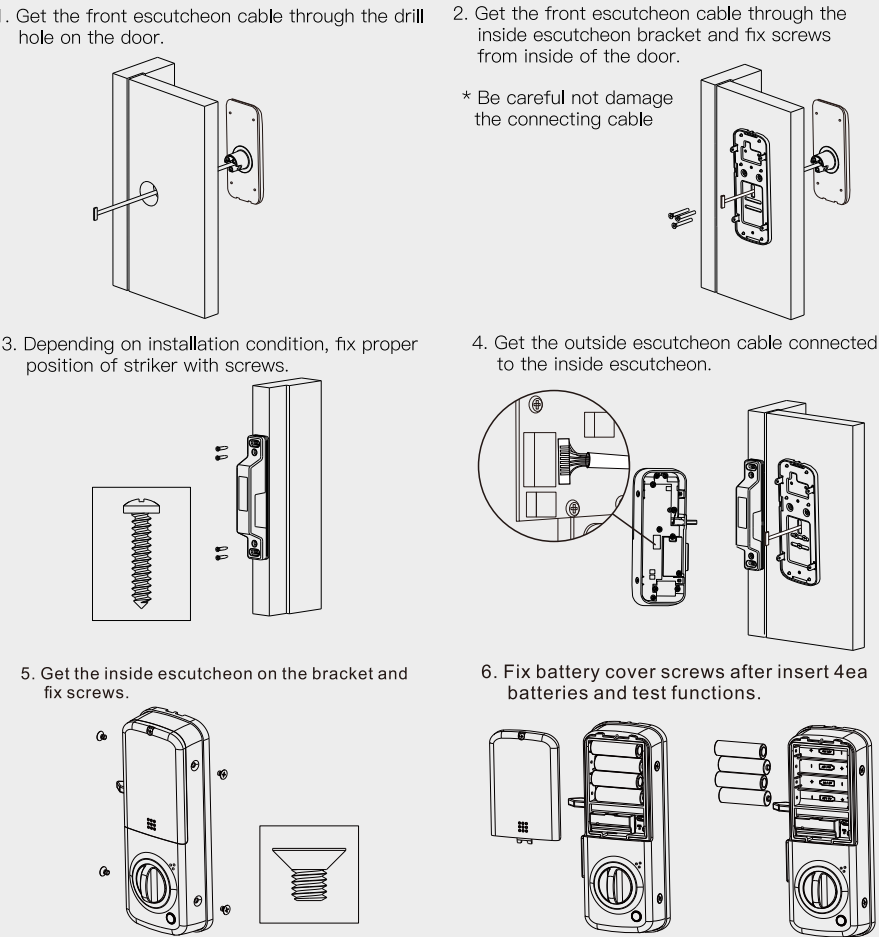
www.kaadasgroup.com

Shenzhen Kaadas Intelligent Technology Co.,Ltd reserves all rights
for the final interpretation to this user manual
All design and specifications are subject to change without notice.

1 Components



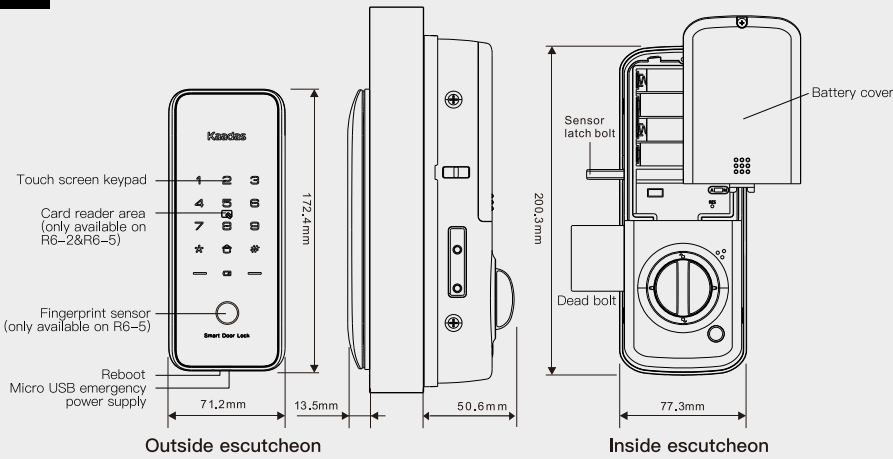
4 Installation



5 Warning

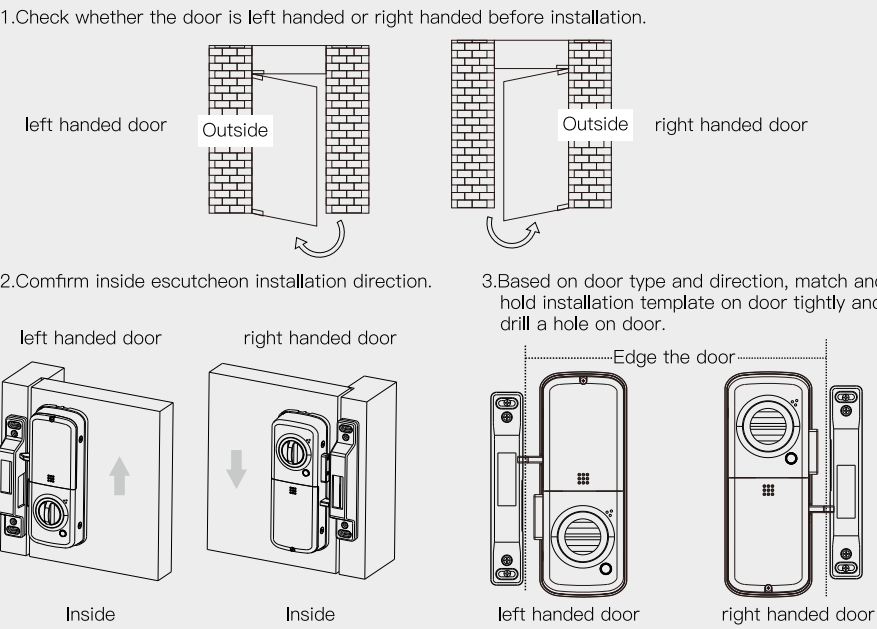
- * Read and understand all instructions before you use your product.
- * If damage is caused by failure to follow instructions, the warranty does not apply.
- * Only use the alkaline batteries.
- * Do not expose the product and accessories to rain or water.
- * Do not expose the product to corrosive substances so as not to damage the protective cover.
- * Do not scrape the fingerprint sensor with sharp objects, otherwise it may cause permanent damage.
- * When cleaning the product, please wipe with a soft cloth.
- * If there is a low battery alert, please replace all the batteries in time and make sure they are properly installed.

2 Specifications



1. You can operate following the voice guide by multi-language (Chinese/English/Spanish/Portuguese/ Russian).
2. Master PIN Code(6~12 digit): Default master PIN code is “12 345678”,please modify it after installation.
3. User PIN Code(6~12 digit): Maximum capacity is 10 with user number [00~99].
4. Temporary user PIN code (6~12 digit): there is only one temporary user PIN code.
5. Card: Maximum capacity is 100 with user number [00~99].
6. Fingerprint: Maximum capacity is 100 with user number [00~99].

3 Preparing for Installation



6 Definitions

- Master Mode:**
The Master Mode could be entered by entering “#+Master PIN Code+#” to programming the lock.
- Master PIN code:**
The Master PIN Code is used for unlock,programming and setting feature.The default Master PIN code[12345678] is required to be changed immediately after enter the menu at the first time.
- Auto locking:**
After unlocking successful by PIN Code/Card/Fingerprint/APP, it will automatically lock in auto mode once the door is closed.
- Manual Mode:**
Auto mode could be adjusted to Manual Mode. In Manual Mode the lock could be locked by verifying user code/fingerprint /card from outside.
- Silent Mode:**
Enabling Silent Mode shuts off the code confirmation tone playback for use in quiet areas. Silent mode is selected in the voice setting of Master Mode.
- Status LED:**
Located on outside escutcheon.
- Wrong Code Entry Limit:**
When wrong user PIN code/card/fingerprint for 5 times,the system will lock down for 100s. After that the lock will activate again. while the lock is lock down, the system will alarm when you are trying to use keypad.
- Reboot button:**
When the system crash down, the lock could be restart by pressing Reboot button on outside escutcheon.
- Reset button:**
After reset operation, the lock will be restored to factory default settings, all user credentials will be deleted. Refer to reset guide.

7 Menu Table

	R6-2/8		R6-5
	1. Modify Master PIN code	2. User Setting	3. Delete Users
Press[1]	1. Add User PIN Code	1. Delete User PIN Code	1. Add User PIN Code
Press[2]	2. Add Temporary PIN Card	2. Delete Temporary PIN Card	2. Add Temporary PIN Card
Press[3]	4. Add User Card(Only available on R6-2)	4. Delete User Card(Only available on R6-2)	3. Add Fingerprint
Press[4]		1. Language Setting	4. Add User Card
Press[5]		2. Volume Setting	1. Delete User PIN Code
Press[6]		3. Opening Mode Setting	2. Delete Temporary PIN Card
Press[7]		1. Join Network	3. Delete Fingerprint
		2. Log off Network	4. Delete User Card
		1. Query Serial No.	
		2. Query Version No.	
		1. Enable Bluetooth	

–Change Master PIN code

1. Touch the screen with your hand to activate.
2. Enter “#” and Master PIN Code with end of “#”. Lock Response: Voice guide
3. Enter “1” to change Master PIN code. Lock Response: Voice guide
4. Enter new 6–12 digit Master PIN Code with the end of “#”. Lock Response: Voice guide
5. Enter above new 6–12 digit Master PIN code again with end of “#”. Lock Response:Voice guide

CAUTION

1. Before changing default Master PIN code[12345678], all other setting menu will be disabled.You have to change Master PIN code first, then do other lock settings.

–Add Up User PIN Codes

User PIN codes can be programmed through the Master PIN Code.

1. Touch the screen with your hand to activate.
2. Enter “#” and Master PIN Code with end of “#”.
3. Enter “2” for user settings. Lock Response: Voice guide.
4. Enter “1” to add user PIN code. Lock Response: Voice guide.
5. Enter user PIN code (6–12 digits) ,and confirm with “#” key. Enter above user PIN code again, and confirm with “#” key.

CAUTION

1. When registering User PIN Codes, the code must be entered within 15 seconds or time expires.
2. No matter setting succeed or failed, the process won’t completed and stay at current stage, you can press “*” to return to previously menu.

-Add Up Temporary User PIN Code

Temporary user PIN code can be programmed through the master PIN code.

1. Touch the screen with your hand to activate.
2. Enter “#” and Master PIN Code with end of “#”.
3. Enter “2” for user settings. Lock Response: Voice guide.
4. Enter “2” to add temporary user PIN code. Lock Response: Voice guide.
5. Enter temporary user PIN code (6-12 digits), and confirm with “#” key. Then enter above temporary user PIN code again, and confirm with “#” key

CAUTION

1. When registering user fingerprint, the fingerprint must be entered within 15 seconds or time expires.
- 2.No matter setting succeed or failed, the process won’t completed and stay at current stage, you can press “*” to return to previously menu.

-Add Up User Fingerprint(Only available on R6-5)

User card can be programmed through the Master PIN Code.

1. Touch the screen with your hand to activate.
2. Enter “#” and Master PIN Code with end of “#”.
3. Enter “2” for user settings. Lock Response: Voice guide.
4. Enter “3” to add user fingerprint. Lock Response: Voice guide.
5. Place your fingerprint on the fingerprint sensor, then take away your finger until voice prompt "remove finger and scan again". Repeat above steps until voice prompt “**setting succeed**”

CAUTION

1. When registering user fingerprint, the fingerprint must be entered within 15 seconds or time expires.
- 2.No matter setting succeed or failed, the process won’t completed and stay at current stage, you can press “*” to return to previously menu.

–Add Up User Card(Only available on R6–2&R6–5)

User card can be programmed through the Master PIN Code.

1. Touch the screen with your hand to activate.
2. Enter “#” and Master PIN Code with end of “#”.
3. Enter “2” for user settings. Lock Response: Voice guide.
4. Enter “4” to add user card. Lock Response: Voice guide.
5. Enter 2 digital user number [00–99], and confirm with “#” key. Lock Response: Voice guide.
6. Place your card on the card icon area until voice prompt “setting succeed”.

CAUTION

1. When registering user card, the card must be entered within 15 seconds or time expires.
2. No matter setting succeed or failed, the process won’t completed and stay at current stage, you can press “*” to return to previously menu.

–Volume Setting

Volume setting can be programmed through the Master PIN code.

1. Touch the screen with your hand to activate.
2. Enter “#”and Master PIN Code with end of “#”.
3. Enter “4” for system setting.
4. Enter “2” for volume setting.
4. Enter “1 or 2” or “3” to adjust the volume (1–High volume/2–Low volume/3–Silent mode).

CAUTION

No matter which volume is set, the volume under master mode is always the high one.

–Opening Mode Setting

Opening mode setting can only be programmed through the Master PIN code.

1. Touch the screen with your hand to activate.
2. Enter “#” and Master PIN Code with end of “#”.
3. Enter “4” for system setting.
4. Enter “3” for opening method setting.
5. Enter “1” for normal mode (single verification), which means opening by PIN code or card.
- OR
6. Enter “2” for security mode (double verification), which means opening by PIN code + card.

–Extended Function

It is reserved for the connection of remote control.

1. Touch the screen with your hand to activate.
2. Enter “#” and Master PIN Code with end of “#”.
3. Enter “5” for extended function.
4. Enter “1” to join network; enter “2” to log off network.

CAUTION

For remote control and Z–wave settings, please refer to its instructions separately.

–System Query

1. Touch the screen with your hand to activate.
2. Enter “#”and Master PIN Code with end of “#”.
3. Enter “6” for system query.
4. Enter “1” to get unique serials number; enter “2” to get version number of firmware.

CAUTION

Shortcut: No need to access master mode, pressing [400#] can get the serials no. , and pressing [114#] can get the version no. .

–Bluetooth Setting

1. Touch the screen with your hand to activate.
2. Enter “#” and Master PIN Code with end of “#”.
3. Enter “7” for Bluetooth setting.
4. Enter “1” to connect Bluetooth; enter “2” to disconnect Bluetooth; enter “3” to disable Bluetooth.
- OR
4. Enter “1” to enable Bluetooth
5. Enter “1” to connect Bluetooth; enter “2” to disconnect Bluetooth; enter “3” to disable Bluetooth.

CAUTION

1. The default setting for Bluetooth is enable.
2. Shortcut: No need to access master mode, entering [403#] to enable Bluetooth, and entering [404#] to disable Bluetooth.
3. When the Bluetooth is enabled, if you didn't use it for one week, it will disable automatically, then you can power-on again to enable it.

Open from outdoor



PIN code
1.Touch key pad by palm to lighten keypad
2.Enter the enrolled PIN code with the end of [#].



Card(Only available on R6–2/R6–5)
Place the enrolled card properly on the card icon area until one beep sound.



Fingerprint(Only available on R6–5)
Place the enrolled fingerprint properly on the fingerprint sensor until one beep sound.

–Delete Temporary User PIN Code

Temporary user PIN codes can be programmed through the Master PIN Code.

1. Touch the screen with your hand to activate.
2. Enter “#” and Master PIN Code with end of “#”.
3. Enter “3”to delete user. Lock Response: Voice guide.
4. Enter “2” to delete temporary user PIN code. Lock Response: Voice guide.

CAUTION

1. When deleting temporary user PIN Codes, the User Number must be entered within 15 seconds or time expires.
2. No matter setting succeed or failed, the process won’t completed and stay at current stage, you can press “*” to return to previously menu.

–Delete User PIN Code

User PIN codes can be programmed through the Master PIN Code.

1. Touch the screen with your hand to activate.
2. Enter “#” and Master PIN Code with end of “#”.
3. Enter “3”to delete user. Lock Response: Voice guide.
4. Enter “1” to delete user PIN code. Lock Response: Voice guide.
5. Enter 2 digital user number [00–09] or enter user PIN code to be deleted, and confirm with “#” key. Lock Response: Voice guide.

OR

4. Enter “2” to delete all user PIN code.

CAUTION

1. When deleting User PIN Codes, the User Number must be entered within 15 seconds or time expires.
2. No matter setting succeed or failed, the process won’t completed and stay at current stage, you can press “*” to return to previously menu.

–Delete User fingerprint(Only available on R6–5)

User fingerprint can be programmed through the Master PIN Code.

1. Touch the screen with your hand to activate.
2. Enter “#” and Master PIN Code with end of “#”.
3. Enter “3” for user settings. Lock Response: Voice guide.
4. Enter “3” to delete user fingerprint. Lock Response: Voice guide.
5. Enter “1” to delete single user fingerprint you do not want. Lock Response: Voice guide.
6. Enter 2 digital user number [00–99] and confirm with “#” key. or place enrolled user fingerprint to be deleted. Lock Response: Voice guide.

OR

5. Enter “2” to delete all user fingerprint.

CAUTION

1. When registering user fingerprint, the fingerprint must be entered within 15 seconds or time expires.
2. No matter setting succeed or failed, the process won’t completed and stay at current stage, you can press “*” to return to previously menu.

–Delete User card (Only available on R6–2/5)

User card can be programmed through the Master PIN Code.

1. Touch the screen with your hand to activate.
2. Enter “#” and Master PIN Code with end of “#”.
3. Enter “3” for user settings. Lock Response: Voice guide.
4. Enter “4” to delete user card. Lock Response: Voice guide.
5. Enter “1” to delete single user card you do not want. Lock Response: Voice guide.
6. Enter 2 digital user number [00–99] and confirm with “#” key. or place enrolled user card to be deleted. Lock Response: Voice guide.

OR

5. Enter “2” to delete all user card.

CAUTION

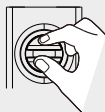
1. When deleting user card, the card must be entered within 15 seconds or time expires.
2. No matter setting succeed or failed, the process won’t completed and stay at current stage, you can press “*” to return to previously menu.

–Language Setting

Language setting can be programmed through the Master PIN code.

1. Touch the screen with your hand to activate.
2. Enter “#” and Master PIN Code with end of “#”.
3. Enter “4” for system setting.
4. Enter “1” for language setting.
5. Enter “1 or 2 or 3 or 4 or 5” to select voice guide language (1–Chinese/2–English/3–Spanish/4–Portuguese /5–Russian)

Open from indoor



Thumb-Turn Knob

Turning thumb-turn knob into the position of unlock icon



CLOSE/OPEN button

Double click CLOSE/OPEN button

Close door from outdoor

Auto Locking Mode: In auto mode, the deadbolt will come out automatically after lock.



Manual Locking Mode:

Close the door and verify the PIN code/fingerprint /card to lock the door.

Enable Privacy Mode



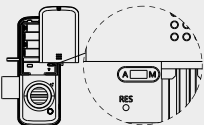
When the door is closed, long press CLOSE/OPEN button for 3 seconds to enable privacy mode.

In privacy mode, all user PIN codes will be restricted. Only master code can unlock and alarm triggered if use other PIN code. To disable, open from inside.

Defense Mode

1. Enable: After door is locked, press [🔒] button to enable defense mode. In this mode, when the door is unlocked from inside, the alarm will be triggered.
2. Disable: Once the door is opened properly from outside, the defense mode will be disabled.

Auto/Manual Mode



Auto/Manual Mode

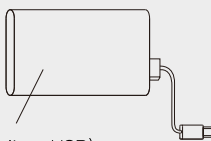
1. Take out battery cover to find the A/M switch.
2. [A] means auto mode: when door is closed, the deadbolt will be driven out automatically, the door will be in locked status.
3. [M] means manual mode: when door is closed, the deadbolt will not be driven out, then the door will be in unlocked status.

Fake PIN code

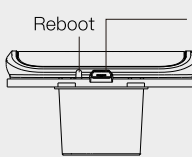


The random numbers can be added before and after the real PIN code, this prevents the user PIN code from being exposed. The maximum length is 32 digits.

Micro USB emergency power supply and Reboot button



Power bank(Micro USB)

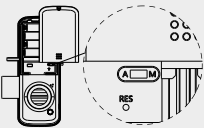


Reboot
Micro USB emergency power supply

When the battery voltage is too low to open the lock from outside, you can use 5V power bank to charge the door lock via Micro USB port. After the door is unlocked, please replace all batteries immediately.

Pressing reboot button to restart the smart lock when system is crash down. And no user data will be deleted.

Reset to factory default settings



Operation Instructions:

1. Open battery cover and find the reset button.
2. Double click [RES] button, then voice prompt “Restored to factory settings. Change master PIN code.”
3. After that all user data and settings will be deleted.