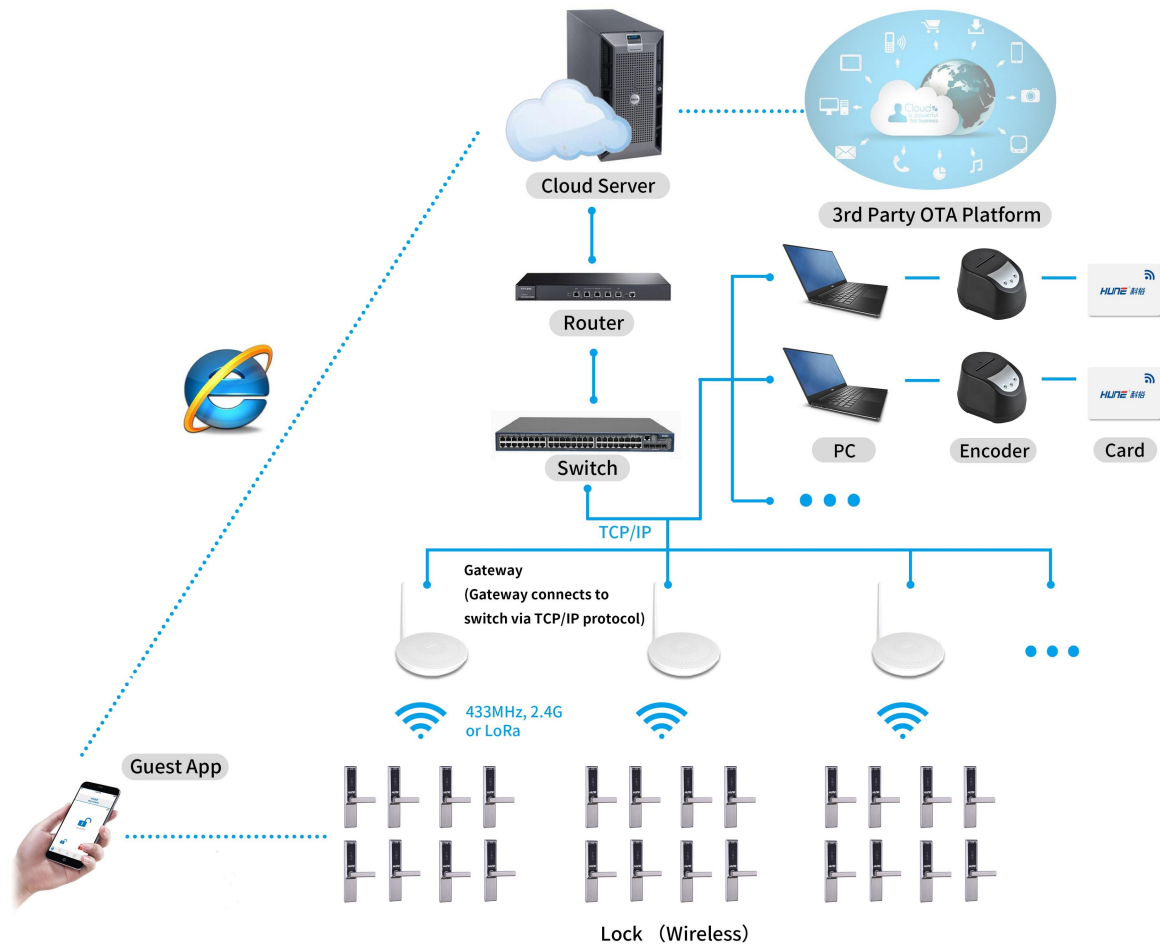


# HUNE LORA Network Lock system



## 1. Component of network lock system

- 1) **Lock:** Link to network by wireless Lora. Powered by 4PCS AA/AAA alkaline battery.
- 2) **Gateway(Bridge):** connect to LAN with cable CAT 5e via TCPIP, connect to the locks wireless. Communication distance from Gateway to lock 50 meters.1 Gateway can link max 30 locks,normally suggest 1 Gateway 15 locks. POE is optional for Gateway.
- 3) **Switch:** (prepared by users),it is standard network equipment.
- 4) **Router:** (prepared by users),it is standard network equipment.
- 5) **Server:** (prepared by users),It is used for service and data management.It can locate at local or on cloud.
- 6) **PC:** (prepared by users),work as client,for Lock software operation.
- 7) **Guest APP:** It is optional for Guest to unlock remotely.(to use this function, the Server should be on

cloud.)

8) **Encoder:** Read and write card, Connect to Computer by USB port.

9) **Card:** as key card or setting card. 100000 times durable.

## 2. Solution merit

1) Lock is wireless, powered by 4PCS AA/AAA Alkaline battery. No cumbersome wiring.

2) Solution mixed with cable and wireless network. Cable to connect Gateway to LAN, Gateway link the locks wireless. In this way, it can enlarge the stability of the network, and reduce the maintenance job of locks' network.

3)

## 3. System function and parameter

### Lock function/Parameter

1) **Applicable card:** Mifare 1 card.

2) **Unlock way:** Card, Online Passcode(Optional), Offline Passcode(Optional), Fingerprint(Optional), Software on PC, APP(Optional)

3) **Capacity:** Max Card 100, No limit offline card. Max Passcode 100, Max Fingerprint 50.

4) **Static consumption:** 70uA

**Working temperature:** -10%-60%, Humidity: 20%-80%

**Battery lifetime:** about 10 months.

### System function/Parameter

1) PC and mobile manage the system.

2) Lock can work online or offline.

3) Can check the battery and online status on the computer.

4) Unlocking record upload to the system on time.

5) Authorize or cancel the unlocking authority(card, passcode, fingerprint etc) online remotely .

6) Error trial unlocking will send notification online

7) API for third party to link.

8) Server:

Hardware: CPU Intel Xeon E5 series, quad core, 2.0GHz or above, 16G RAM or above, 1T hard disc or

above.

Software: Windows server 2008 or above, or Windows 10 or above, or Linux, Centos 7.0 or above

9) Database: Mysql, version 5.7 or above.

### **Gateway parameter**

Material: ABS

Power: DC5V~12V, <2W. POE is optional.

Communications protocol: TCP/IP to LAN. Lora (410MHz~470MHz) to lock.

RF Power 22dBm

Size D128.5\*23.5mm