



# evoyo

MWM65B-ZB.20

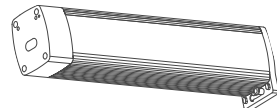
Curtain Motor

Datasheet

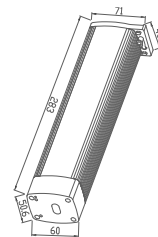
## Overview

The Curtain Motor is directly driven by the DC motor, and it can be manually pulled even in the case of network disconnection or power failure. With the support of the Evoyo gateway, the curtain can be opened, closed, stopped or opened to a specified percentage position through APP, smart panel, etc. In conjunction with other devices, intelligent linkage can be realized, giving you an evolved home.

\*For more information about Evoyo products, please log on [www.hdlautomation.com](http://www.hdlautomation.com) or call 400-855-8535.

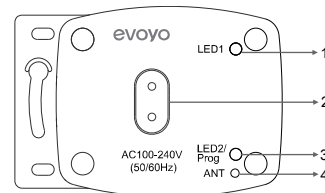


## Components

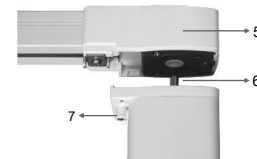


Front View

1. LED 1 / Button for learning IR codes (Please refer to the Remote Control Specification for more information.)
2. Power interface
3. Programming button / LED 2 indicator
4. Reserved antenna
5. Drive unit
6. Motor shaft
7. Clipping lock



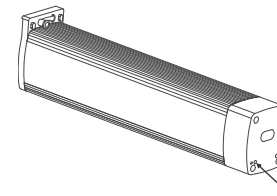
Components - Side View



Components - Side View

## Indicator and Device Status Description

Network connection / disconnection operation	Indicator status	Device status
Keep pressing the programming button for 5s to connect the network	Green LED on	Before network connection
	Green LED flashes slowly	During network connection
	Green LED off	Network connection completed
	Green LED flashes once every 5s	After network connection, the device works normally.
Short press the button twice, and then keep pressing the button for 10s to disconnect the network	Green LED flashes quickly	During network disconnection
	Green LED on	After network disconnection



Keep pressing the programming button for 5s to connect the network

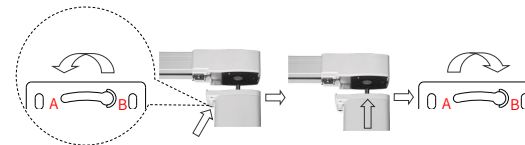
## Installation

Please follow the instructions in this chapter to install.

Step 1. Pull and turn the clipping lock from B to A.

Step 2. Aim the motor shaft at the drive unit and push it into the drive unit gently.

Step 3. Turn the clipping lock from A to B to lock the motor.



### Quick Setting

1. Search and download the Evoyo Home APP from the software application store.

2. Preparation before network connection: Power on the Curtain Motor and gateway, and make sure that the mobile phone is connected to the router.

\*If you use a dual-band router, please turn off the 5GHz Wi-Fi network first.

\*Make sure that the mobile phone and the gateway are in the same Wi-Fi network.

### 3. Add Curtain Motor:

In the Evoyo Home APP, click "My" → "Device" → select gateway (if there is only one gateway, the device is added to the gateway by default) → "+" → select the device type

"Curtain Motor" → follow the prompt operation in the APP and make the Curtain Motor

enter the network connection mode → click "Next" to start the network configuration.

\*If the gateway has not been added, you need to add the gateway first.

\*If you fail to add the Curtain Motor, please select the following operation and try to add it again in the APP:

① Move the gateway closer to the Curtain Motor, power off the Curtain Motor, and then

Power on again.

② Disconnect the network: short press the programming button twice and then long press button for 10s, the green LED will flash quickly then keeps on, and then disconnect the network successfully.

If you need help, please log on [www.hdlautomation.com](http://www.hdlautomation.com) or call 400-855-8535.

### Basic Parameters

Rated input voltage: 100~240VAC (50/60Hz)

Standby power consumption: ≤1W

Communication: Zigbee 3.0

Motor rotate torque: 1.2N.m

Motor rotate speed: 95rpm

Wireless transmission power: +10dbm

Wireless sensitivity: -103dbm

Indoor communication distance (barrier free): ≤30m

Working frequency: 2.4GHz

Working temperature: -5°C~45°C

Working relative humidity: ≤90%RH, no condensation

Dimensions: 283×71×50.6 (mm)

Net weight: 995g

Housing material: PC, aluminum

Installation: Wall hanging (Ceiling mount, wall mount)

Protection rating (Compliant with EN 60529): IP41

### Notes and Safety Precautions

1. The motor should work in conjunction with the Evoyo gateway.

2. Do not use the motor outdoors or in high temperature environment, and avoid direct sunlight.

3. The maximum load of the curtain track is 50kg, and the curtain fabric shall not exceed this weight.

4. Do not put any additional weight on the curtain track, please do not climb the curtain.

5. When the motor is installed to the drive unit, please check and make sure that the clipping lock is pushed into the lock hole, otherwise the motor will fall down and cause product damage or personal injury.

6. The installation and testing for the product must be carried out by HDL Automation Co., Ltd. or its appointed service agencies. The electric construction shall comply with local laws and safety regulations.

7. HDL will not be responsible for any consequence caused by the inexpert or faulty installation and wiring methods, which are not in accordance with the instructions contained in this operating instruction.

8. Please do not privately disassemble or replace any parts of the product. Otherwise, it may cause mechanical fault, electric shock, fire or personal injuries.

9. Please contact our after-sales departments or our designated service agencies for your maintenance service. Product failures caused by private disassembly are not subject to this warranty.

10. The motor is for indoor use only, please do not use it in a humid environment or outdoors.

11. The motor is only applicable for safe use in areas below 2000 meters above sea level.

### Package Contents

MWM65B-ZB.20\*1 / Power cable\*1 / Datasheet\*1

### Technical support

E-mail: [hdltickets@hdlautomation.com](mailto:hdltickets@hdlautomation.com)

Website: <https://www.hdlautomation.com>

©Copyright by HDL Automation Co., Ltd. All rights reserved.

Specifications subject to change without notice.