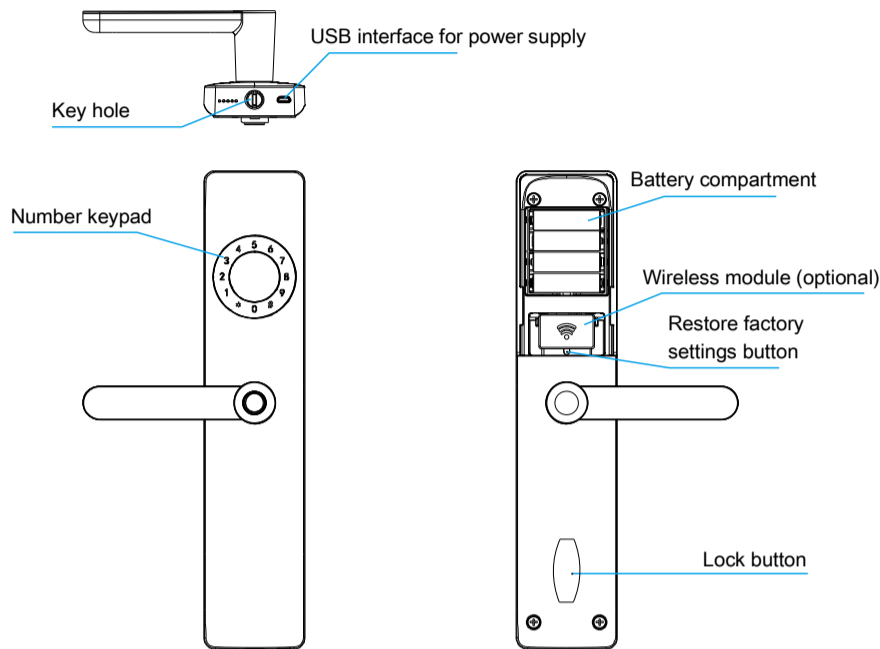


S-one Human Voice Navigation Series

— S-ONE Smart Door Lock Installation Manual

(For Online and Stand-alone Edition)

A\_ Product Profile

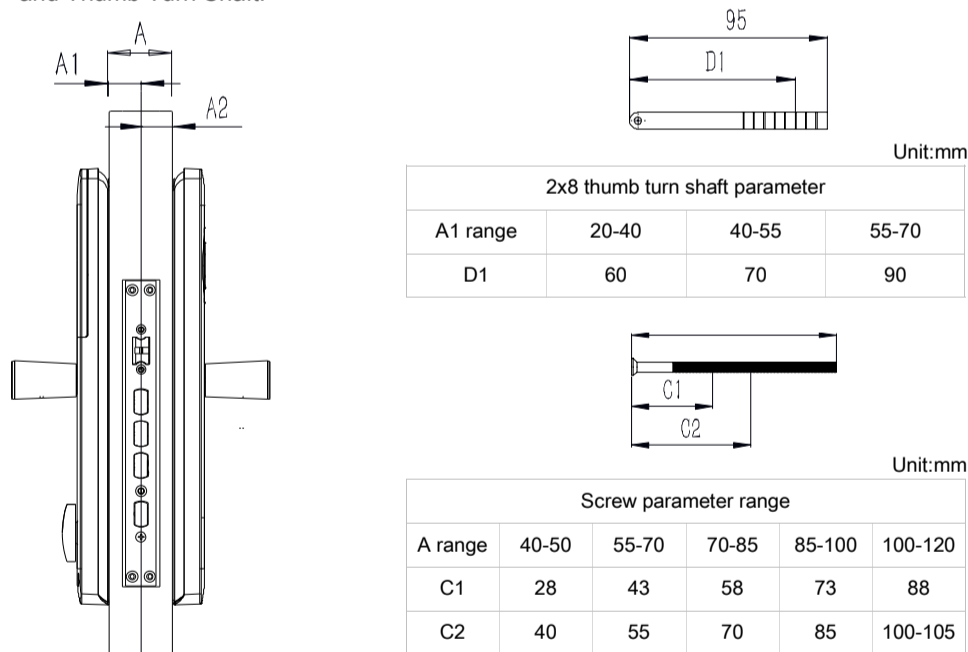


B\_ Application

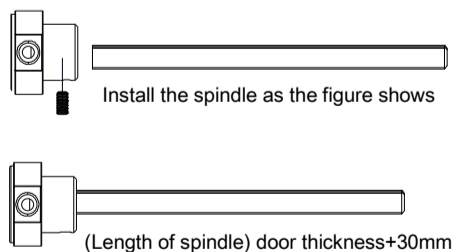
- This product can be applied to the military, hospital, bank, business building or residential building, etc.
- Door thickness requirement: 40-100mm (Please contact the local supplier if the door thickness is out of this range.)
- Door material: wood, stainless steel, iron, bronze, or other security door with multiple-type of material.
- If not stated in advance, we provide you standard lock body, i.e., 6068-A (standard dimension: 240x24mm).

①

02\_Accessory Preparation Based on the Parameter Table of Spindle, Locking Pin, Screw and Thumb Turn Shaft.

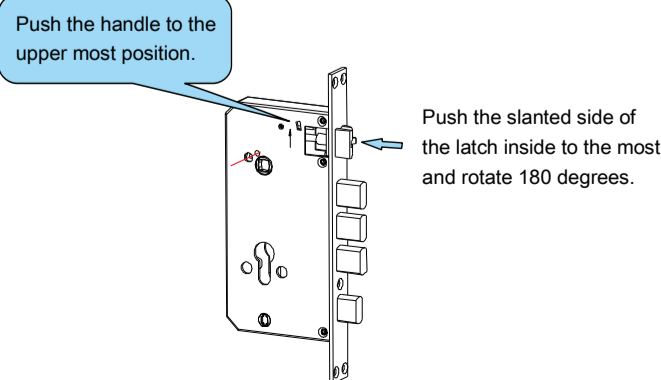


Note: A1 and A2 refers to the distance between the door surface and the central line of the latch.



E\_ Installation

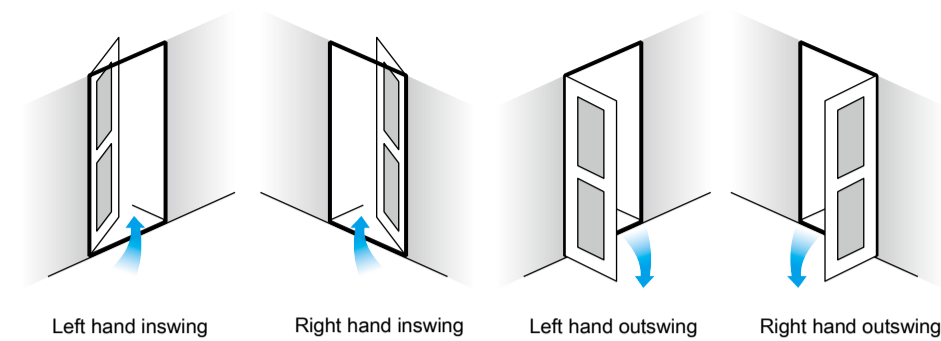
01\_Change handle orientation for right or left swing doors, as shown in the figures below:



③

C\_ Installation Requirement

01\_Check the Door Open Direction



02\_Door thickness and latch thickness measurement



Note: if the customer buys this lock to replace the original one, the door thickness and lock latch size should be provided for us to offer the most proper lock according to the size of the drilled hole.

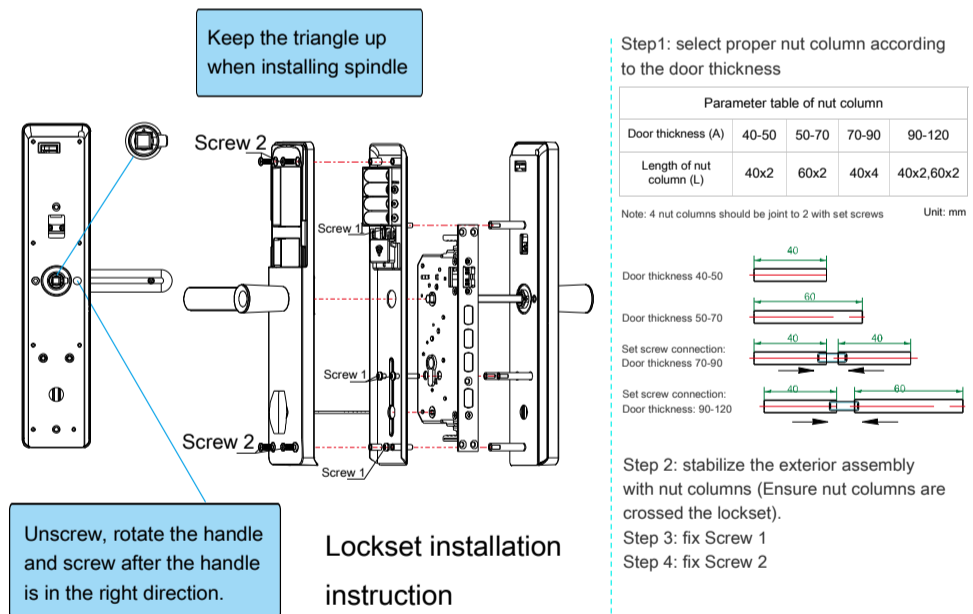
D\_ Before Installation

01\_Drilling Lock Slot

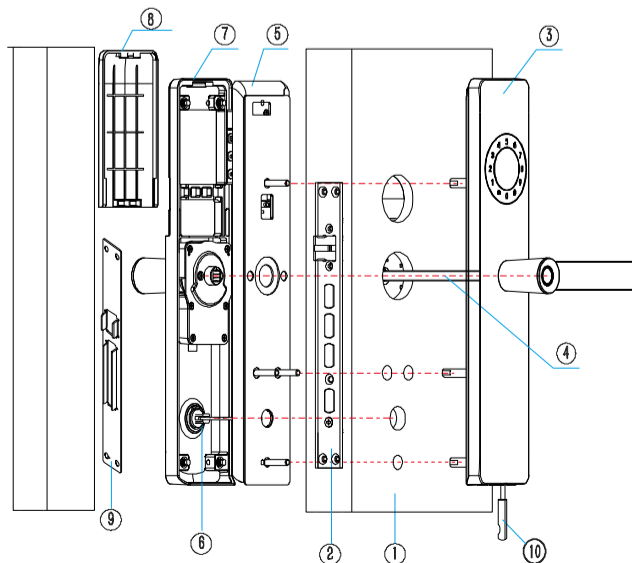
Drill a slot for the lockset at the proper height of the side of the door, as shown in the figure below. Afterwards, drill the installation holes at the outer side of the door according to the instructions provided. Please put the lockset to the door and drill the installation holes based on the position of the spindle in order to avoid error.

②

02\_Handle Direction Switch, as shown in the figures below:



03\_Installation Steps of Lockset



1. Door (Drill holes according to the drilling instruction)
2. Mechanical lock (Install the lock)
3. Exterior assembly (Short length interconnect cross the lock hole)
4. 8x8 spindle (Select proper spindle according to the door thickness)
5. Mounting plate (Stabilized with screws, and connect with the short length interconnect of exterior assembly)
6. Tail gauge (Select proper length of thumb turn shaft according to the door thickness)
7. Interior assembly
8. Battery cover (Put in battery after installation and test)
9. Strike plate
10. Foldable key (Keep in a safe outdoor place)

Note: Ensure the spindle is set in the lockset when installing exterior assembly, and ensure the thumb turn shaft is set in the lockset when installing interior assembly.

④