

Wireless Systems

buspro WIRELESS



**Wall Panel &
Power Interface**



**Controllers/
Actuators**



Sensors



Gateways

Wall Panels

HDL®

- There are built-in smart modules in the power interfaces, such as relays and dimmers
- The control panels directly connect with their targets via AC power cables And of course, they communicate wirelessly.

DLP



iTouch



iSmart



Power Interfaces

HDL[®]

**Power Interfaces
(L+N Type)**



**3CH Dimmer Power Interface
(L Type)**



**3CH Dimmer Power Interface
(L+N Type)**



**3CH Relay Power Interface
(L+N Type)**

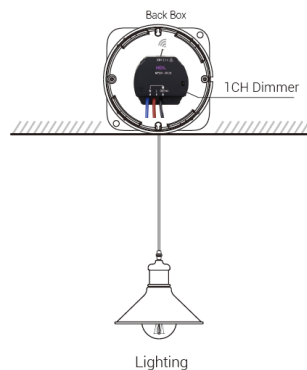


**1CH Relay Power Interface
(L+N Type)**

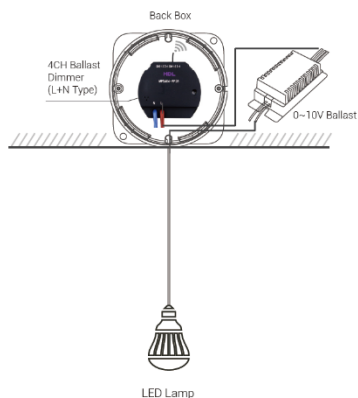


Dimmers

1CH Dimmer (L+N Type)



4CH Ballast Dimmer (L+N Type)

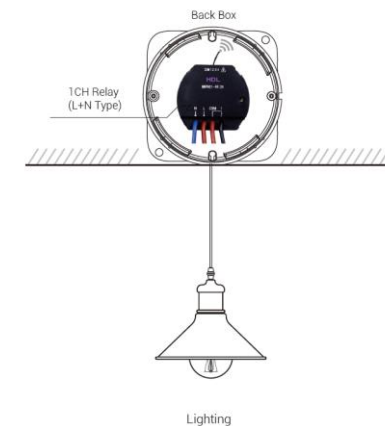


Relays

1CH Relay (L+N Type)



1CH relay output and 4CH dry contact



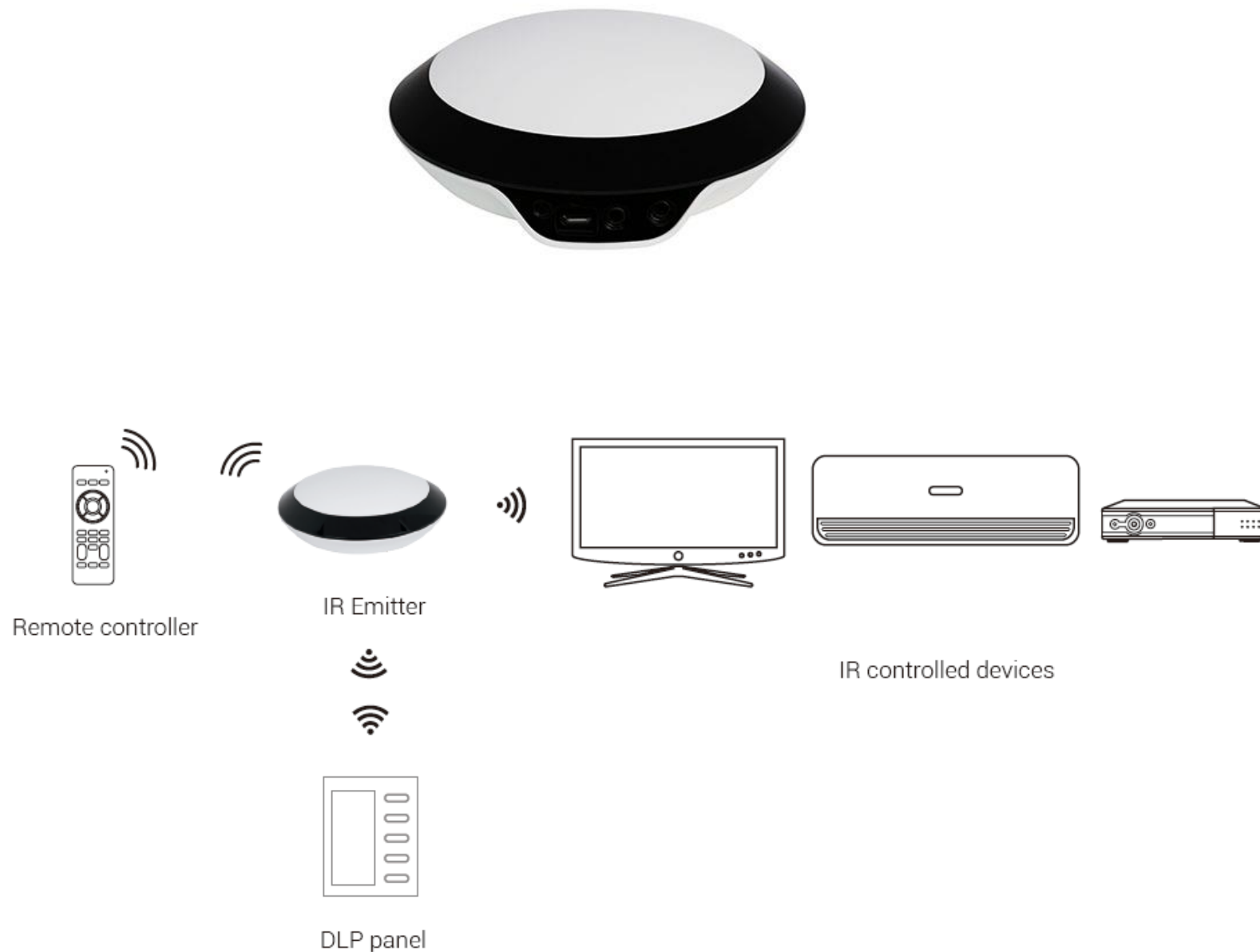
2CH Relay (L+N Type)



2CH relay output and 4CH dry contact

IR Emitter

- Control IR devices from a HDL wall panel
- or your mobile device
- Enables full control over all IR devices
- Supports online upgrades
- Build a custom IR library



Shading Control

HDL®

1CH Curtain Controller (L+N Type)

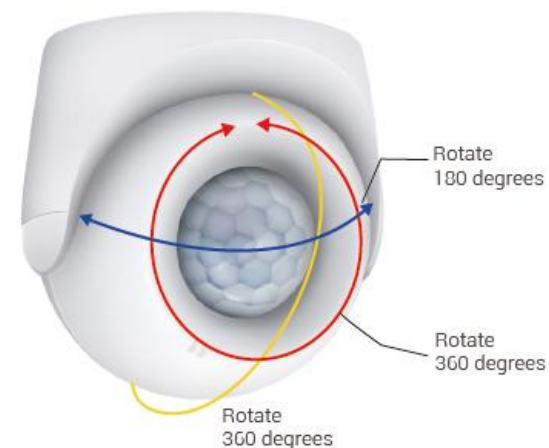


Curtain Motor



Sensors

PIR & Lux Sensor



Ultrasonic Sensor



Gateways

Mesh Gateway



4CH Dry Contact



Buspro / Wireless Converter



RJ45



HDL-BUS



Wireless



Zigbee Smart Thermostatic
Radiator Valve

MIGT05.19



6 Adapters.



Three working modes:

- stand-alone;
- manual mode, works as electric switch;
- auto mode, enable the pi regulation.



Three 1.5 batteries; standard M15*30MM



child lock; auto lock under standby mode

buspro

