

Minew ESL Replacement Battery Guidelines V1.0

The metal removal tools (and Tweezers for disassembling) mentioned in the guide can all be replaced with plastic triangle pry opening tool, which are less likely to damage the casing.

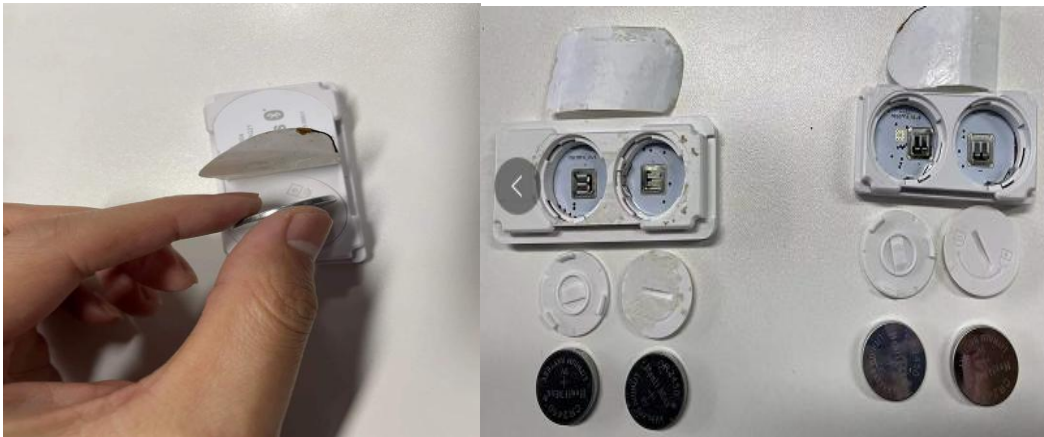


MTag1.54/2.13/2.9" (CR2450*2)

1. With coins, blades, new batteries, take Mtag21 as an example: use the blade to lift the adhesive-backed model sticker at an angle, then tear the entire cover off.



2. Insert a coin or a 2mm thick tool into the slot of the battery cover and turn it counterclockwise according to the unlocking direction of the battery cover. After the battery cover is loose, open the battery cover and take out the battery.



3.Put the new battery into the battery slot, pay attention to the positive and negative poles of the battery, cover the battery cover, and turn it clockwise according to the battery cover locking diagram. Attach the model backing. Replacement is complete.



MTag4.2/5.83" (CR2450*4)

With the help of tweezers, screwdrivers, removal tools. Take Mtag42 as an example, take out the 4 waterproof silicone screw caps on the back of the label with tweezers, and unscrew the 4 screws in sequence.



There is a disassembly opening in the lower right corner of the label. Use the disassembly tool to pry open a small opening. The disassembly tool cuts a week along the gap of the casing frame, open the back cover of the label, and take out the batteries in turn.



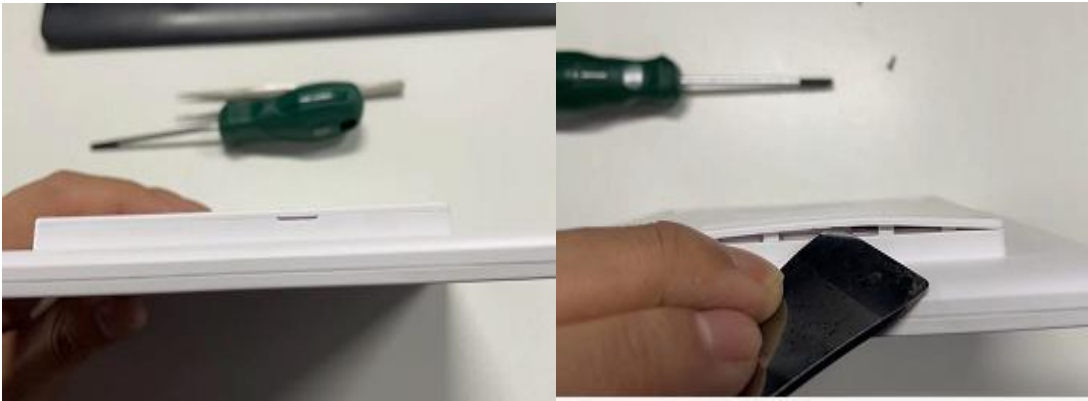
1. Install the back cover and press the frame buckle. Tighten the 4 screws and use tweezers to install the waterproof silicone screw cap back. Replacement is complete.

MTag7.5" (CR2477*6)

1. With the help of screwdrivers, tweezers, removal tools. Unscrew the two screws on the back of the label



2. There is a disassembly opening on the left side of the rear case. Use a disassembly tool to pry open a small opening, and make a circle along the gap of the frame of the case, open the label back case, and take out the batteries one by one.

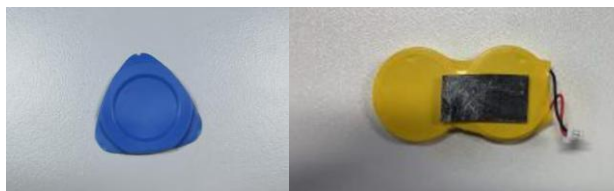


3. Take out the battery, replace it with a new one, install the rear case, press the frame buckle, tighten the screws, and the replacement is complete.



STag2.13/2.66/2.9"/S**T**ag2911 with button (CR2450 Parallel battery pack*1)

Items preparation: Flat Tweezers, plastic triangle pry opening tool (or other removal tool), CR2450 parallel battery pack, ESL that requires battery replacement. take 2.66" as an example.

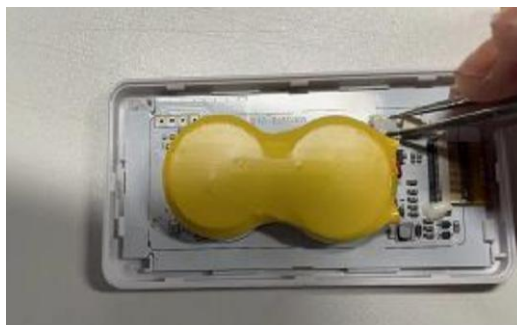


1. Find the disassembly port in the lower right corner of the ESL back cover, insert one end of the plastic triangle pry opening tool, move it around the gap between the back cover and the front cover.

Remove the back cover of the ESL



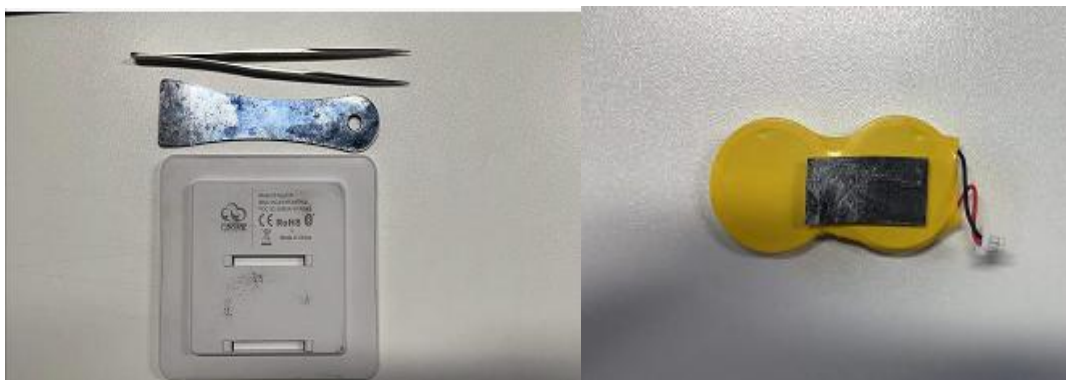
2. Place the label on the desktop with the screen down. Use tweezers to push out the battery connection terminals. If the battery connector of ESL is glued, cleaned off the glue.



3. Remove the battery pack and the double-sided tape underneath. Paste the new battery pack in the original position, and insert the battery terminal into the connector. Be careful not to damage the screen cable.
4. Install the back cover and press a round of the border clamp to complete the replacement.

STag4.2" (CR2450 Parallel battery pack*2)

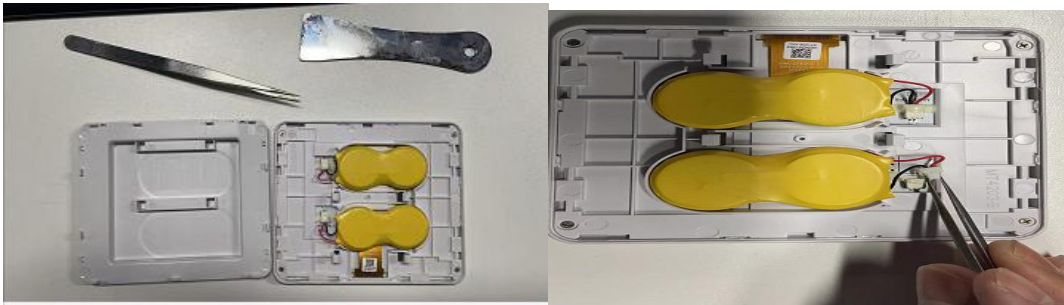
1. With removal tool, tweezers, new battery.



2. Find the disassembly opening in the lower right corner of the label, use a disassembly tool to pry open a small opening, and make a circle along the gap of the frame of the case, open the back case of the label, and take out the batteries one by one.



3. The battery connector interface of the factory product is glued, clean up the glue, and use tweezers to gently push out the battery cable. Paste the new battery pack, fix it in the original position, insert the battery connector, pay attention to the screen cable to prevent damage. Install the back cover, press the frame buckle, and the replacement is complete.



S Tag58" (CR2450 Parallel battery pack*2)

1. With removal tools, tweezers, screwdriver, new battery pack. Remove the two screws in the middle of the rear case.



2. Find the disassembly opening in the lower right corner of the label, use a disassembly tool to pry open a small opening, and make a circle along the gap of the casing frame, and open the back cover of the label.



3. The battery connector interface of the factory product is glued, clean up the glue, and use tweezers to gently push out the battery cable. The new battery pack is pasted, fixed in the original position, and inserted into the battery connector. Install the back cover, press the frame buckle, and the replacement is complete.



S7ag7.5" (No.7 Alkaline battery*4)

1. Prepare a screwdriver, 4 AA alkaline batteries



2. Open the back cover and replace 4 AA alkaline batteries.

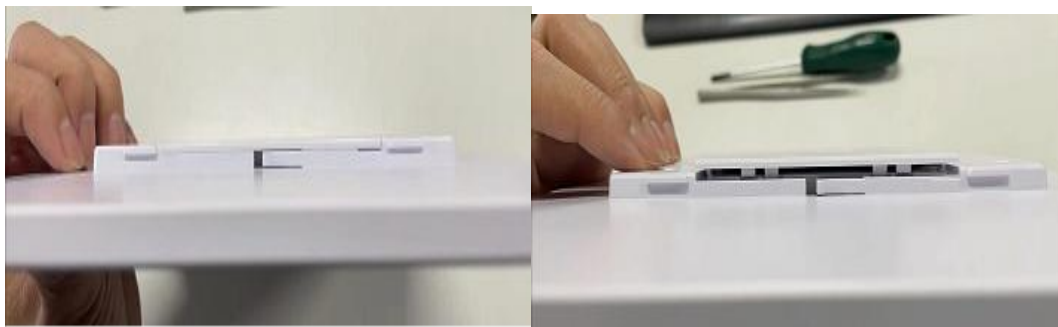


S Tag11.6" (CP783970 battery pack*1)

1. With the help of tweezers, removal tools, new batteries. Unscrew the two screws in the middle of the rear case.



2. There is a disassembly opening on the left side of the rear shell. Use a disassembly tool to pry open a small opening, and make a circle along the gap of the shell frame to open the labeled rear shell.



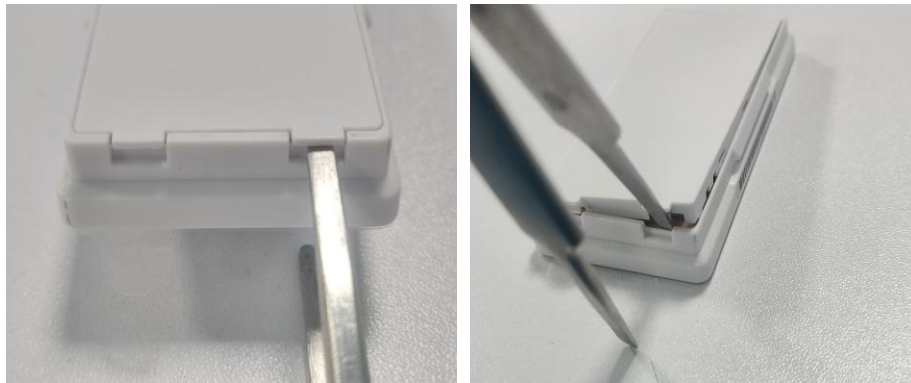
3. The battery connector interface of the factory product is glued, clean up the glue, and use tweezers to gently push out the battery cable. Paste the new battery pack, fix it in the original position, insert the battery connector, install the rear case, press the frame buckle, and the replacement is complete.



DS021 (CP312750 battery pack*1)

Items preparation: Flat Tweezers (or other removal tool), battery, double-side tap.

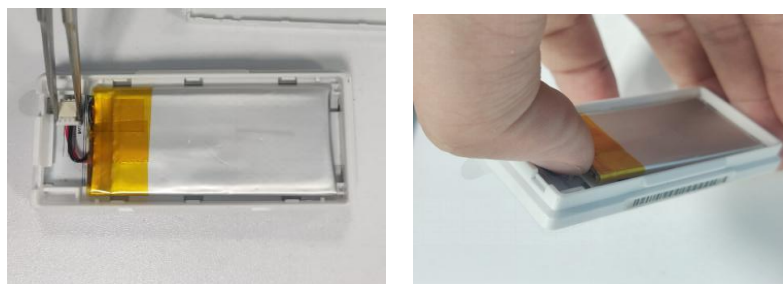
1. After the tweezers are stuck into the disassembly position, lift up, and then pry open the battery cover



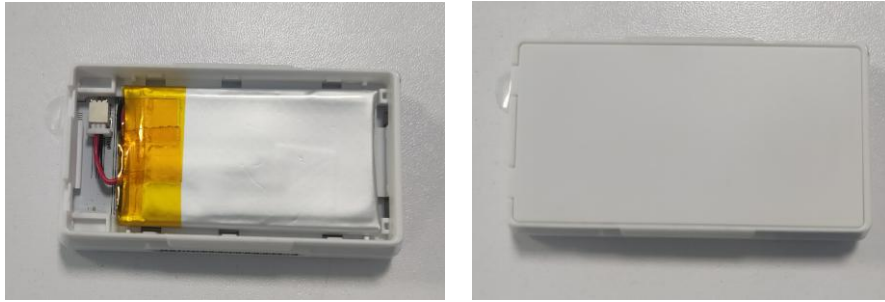
2. Force the tweezers along the gap to outward direction of the shell to pry open the fastener.



3. Remove the battery plug with tweezers. Pick the battery with your thumb (note: there are 2 pieces of double-sided tape fixed at the end of the battery)



4. Install the new battery with tweezers. Secure the battery with new double-sided tape and press the end of the battery for 3 to 5 seconds. Reinstall the battery cover.



DS029/ DS035 (CP502440 battery pack*1)

Items preparation: Flat Tweezers (or other removal tool), battery, double-side tap.

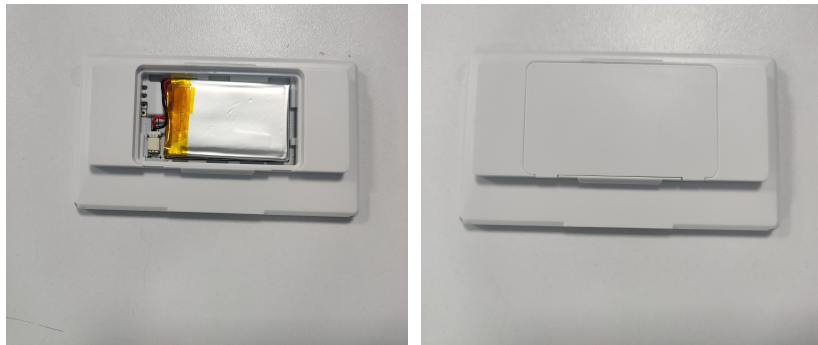
1. After the tweezers are stuck into the disassembly position, lift up. Then insert the tweezers into the other side of the disassembly position and lift up, and pry open the battery cover. (Do not damage the waterproof ring).



2. Remove the battery plug with tweezers. Pick the battery with your thumb (note: there are 2 pieces of double-sided tape fixed at the end of the battery)



3. Install the new battery with tweezers (silk-screen down). Secure the battery with new double-sided tape and press the end of the battery for 3 to 5 seconds. Reinstall the battery cover.



DS042 (CP502440 battery pack*2)

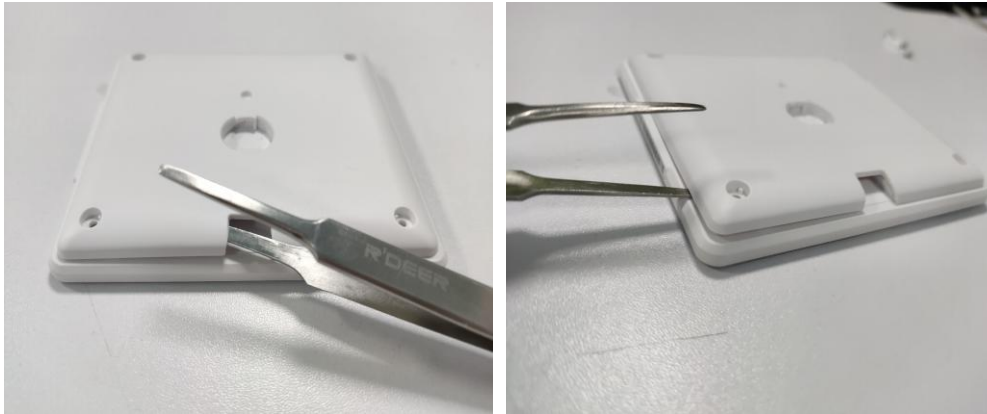
Items preparation: Flat Tweezers (or other removal tool), battery, double-side tap, cross screwdriver.



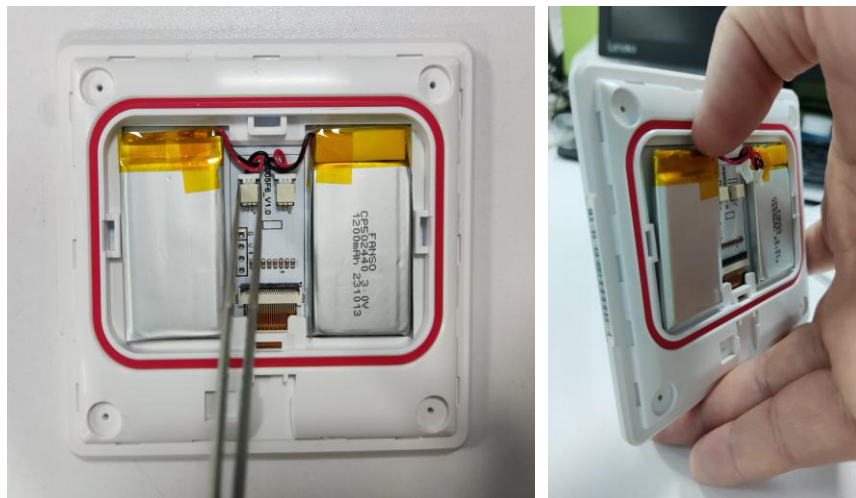
1. Remove the screw plug with tweezers. Remove the screws with a screwdriver.



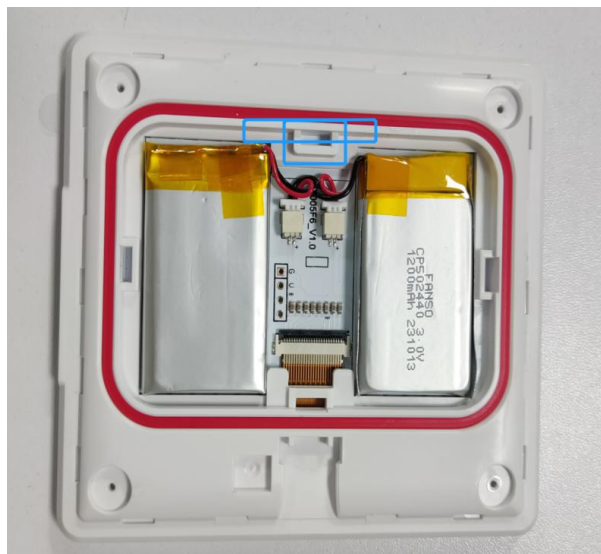
2. Insert the tweezers into the side of the disassembly position and lift up. Pry open a fastener. Then pry the tweezers around the gap to open all the fastener.



3. Remove the battery plugs with tweezers. Pick the batteries with your thumb (note: there are 2 pieces of double-sided tape fixed at the end of the battery)



4. Install the new batteries (silk-screen one up, one down) with tweezers. Secure the battery with new double-sided tape and press the end of the battery for 3 to 5 seconds. Place the wire so that it does not rest on the fasteners and waterproof line.



5. Install the battery cover. Screw on the screws. Install the screw plug.



S Tag21F/DS026 (The battery is not replaceable)